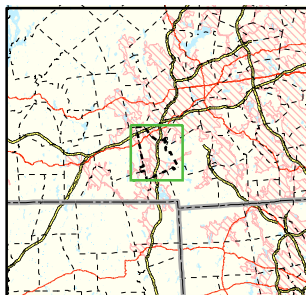


Area of Focus:



# NPDES Phase II Stormwater Program Automatically Designated MS4 Areas *Oxford, Massachusetts*



Oxford Town Boundary



Regulated Area (2000 Urbanized Area)

Town Population: 13,352  
Regulated Population: 11,027



0 0.5 1 1.5 Miles

Data Sources: Urbanized Areas from US Census Bureau (2000). Political boundaries from MassGIS. Hydrography from NHD. Transportation data from GDT at 1:24,000. Map Created: 11/19/02; US EPA- New England GIS Center L:/projects/stormwater/phase2/matowns/new/