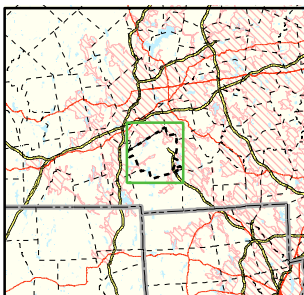


Area of Focus:



# NPDES Phase II Stormwater Program Automatically Designated MS4 Areas *Sutton, Massachusetts*



Sutton Town Boundary



Regulated Area (2000 Urbanized Area)

Town Population: 8,250  
Regulated Population: 2,725



0 0.5 1 1.5 Miles

Data Sources: Urbanized Areas from US Census Bureau (2000). Political boundaries from MassGIS. Hydrography from NHD. Transportation data from GDT at 1:24,000. Map Created: 9/30/02; US EPA- New England GIS Center L:/projects/stormwater/phase2/matowns/new/