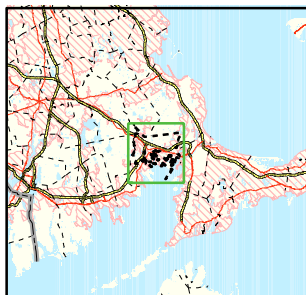


Area of Focus:



# NPDES Phase II Stormwater Program Automatically Designated MS4 Areas *Wareham, Massachusetts*

- Wareham Town Boundary
- Regulated Area (2000 Urbanized Area)

Town Population: 20,335  
Regulated Population: 18,162



0 0.6 1.2 1.8 Miles

Data Sources: Urbanized Areas from US Census Bureau (2000). Political boundaries from MassGIS. Hydrography from NHD. Transportation data from GDT at 1:24,000. Map Created: 11/25/02; US EPA- New England GIS Center  
L:/projects/stormwater/phase2/matowns/new/