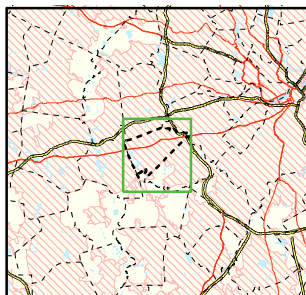


Area of Focus:



# NPDES Phase II Stormwater Program Automatically Designated MS4 Areas *Wellesley, Massachusetts*



Wellesley Town Boundary



Regulated Area (2000 Urbanized Area)

Town Population: 26,613  
Regulated Population: 26,633



0 0.3 0.6 0.9 Miles

Data Sources: Urbanized Areas from US Census Bureau (2000). Political boundaries from MassGIS. Hydrography from NHD. Transportation data from GDT at 1:24,000. Map Created: 11/25/02; US EPA- New England GIS Center L:/projects/stormwater/phase2/matowns/new/