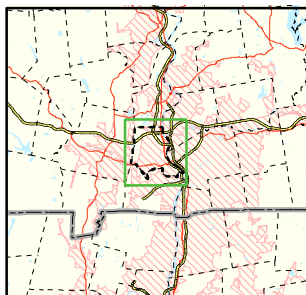


Area of Focus:



NPDES Phase II Stormwater Program Automatically Designated MS4 Areas *West Springfield, Massachusetts*

- West Springfield Town Boundary
- Regulated Area (2000 Urbanized Area)

Town Population: 27,899
Regulated Population: 27,775



0 0.4 0.8 1.2 Miles

Data Sources: Urbanized Areas from US Census Bureau (2000). Political boundaries from MassGIS. Hydrography from NHD. Transportation data from GDT at 1:24,000.
Map Created: 11/25/02; US EPA- New England GIS Center
L:/projects/stormwater/phase2/matowns/new/