

Moss Landing Battery Fire Cleanup

Keeping the Community Safe

Throughout the post-fire recovery process at the Moss Landing Power Plant, our highest priorities are worker safety, community safety, and environmental protection. Vistra, with oversight from EPA, has implemented numerous safety precautions to ensure the process proceeds safely and smoothly.

Safety Measures



Air Quality

- Continuous air quality monitoring and daily air sampling is conducted both onsite and in the surrounding community.
 - Stations around the plant continuously monitor air for PM2.5 (particulate matter that is 2.5 microns or less) and hydrogen fluoride concentrations in real time.
 - Sampling stations pump air through a filter, which is collected daily and analyzed to determine the concentration of metals (aluminum, cobalt, copper, lead, lithium, manganese, and nickel) in the air.
 - If monitoring or sampling detects any readings above EPA-approved action levels, additional control measures will be implemented as needed. If a fire or other threat to human health is detected, work will be stopped and the EPA-approved [Emergency Response Plan](#) will be implemented.
- Water is sprayed at the site to control dust from cleanup activities.



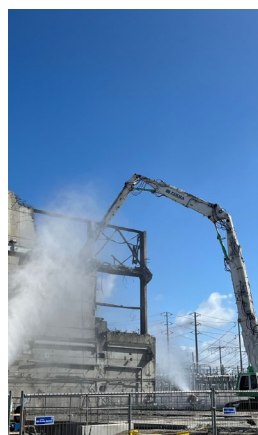
Worker Safety & Decontamination

- Workers go through extensive training and certification.
- EPA oversight team and contractors are on-site to oversee operations.
- Workers wear personal protective equipment (PPE) during clean-up activities and complete a thorough decontamination process prior to exiting the impacted area of the site.
- A private professional fire brigade is onsite 24/7.



Sampling

- All water from Moss 300 (the burned building) is collected onsite and sampled to ensure proper handling and disposal.
 - Water with contaminant levels above pre-approved pollution requirements will be transported to an approved off-site facility. See Water Collection fact sheet for more information.
- All contaminated ash and debris removed from the Moss 300 building will be sampled and transported to appropriate EPA-approved disposal or recycling facilities.
 - Trucks transporting materials offsite use routes chosen specifically to ensure road safety and minimize traffic. See Truck Routes fact sheet for more information.



Water cannons spray a fine mist to control dust from cleanup activities



Air quality monitors on site and in the community are collecting air quality data 24/7



EPA leadership visits

Safety will remain the number one priority on site

To learn more, visit epa.gov/ca/moss-landing-vistra-battery-fire

