

3 **APPENDIX A: FRAMEWORK**
4 **FOR REVISING THE**
5 **COMPREHENSIVE**
6 **CONSERVATION**
7 **MANAGEMENT PLAN**

10 **LAKE PONTCHARTRAIN BASIN RESTORATION**
11 **PROGRAM**

12 The purpose of the Lake Pontchartrain Basin Restoration Program is to restore the ecological health of the
13 basin by developing and funding restoration projects and related scientific and public education projects to
14 reduce the risk of pollution.

15 **CITATION**

16 Lake Pontchartrain Basin Restoration Program. (2025). Appendix A: Framework for Revising the
17 Comprehensive Conservation Management Plan. (pp. 1-23).

18 **ACKNOWLEDGMENTS**

19 This document was developed in support of the Lake Pontchartrain Basin Restoration Program's
20 Comprehensive Conservation Management Plan update. The document was prepared by a member of the
21 Theodore Roosevelt Conservation Partnership team: Dr. Denise Reed (Denise Reed, LLC).

22 **Table of Contents**

23 Lake Pontchartrain Basin Restoration Program 2

24 Citation..... 2

25 Acknowledgments 2

26 List of Abbreviations 6

27 Introduction 7

28 Overall Framework 7

29 Goals and Objectives 8

30 Work Groups 11

31 Issue Report..... 12

32 *Review of Previous Plans and Documents* 12

33 *Draft List of Issues*..... 14

34 *Development of the Issue Report* 17

35 Climate Vulnerability Assessment 17

36 Action Plan..... 18

37 Supporting Strategies and Monitoring Report 20

38 *Habitat Protection/Restoration Strategy* 20

39 *Communication/Outreach Strategy* 20

40 *Monitoring Report* 21

41 Draft and Final CCMP 22

42

43 **List of Figures**

44 Figure 1. Overall framework for CCMP revision..... 8

45 Figure 2. Outline of Action Plan structure..... 19

46



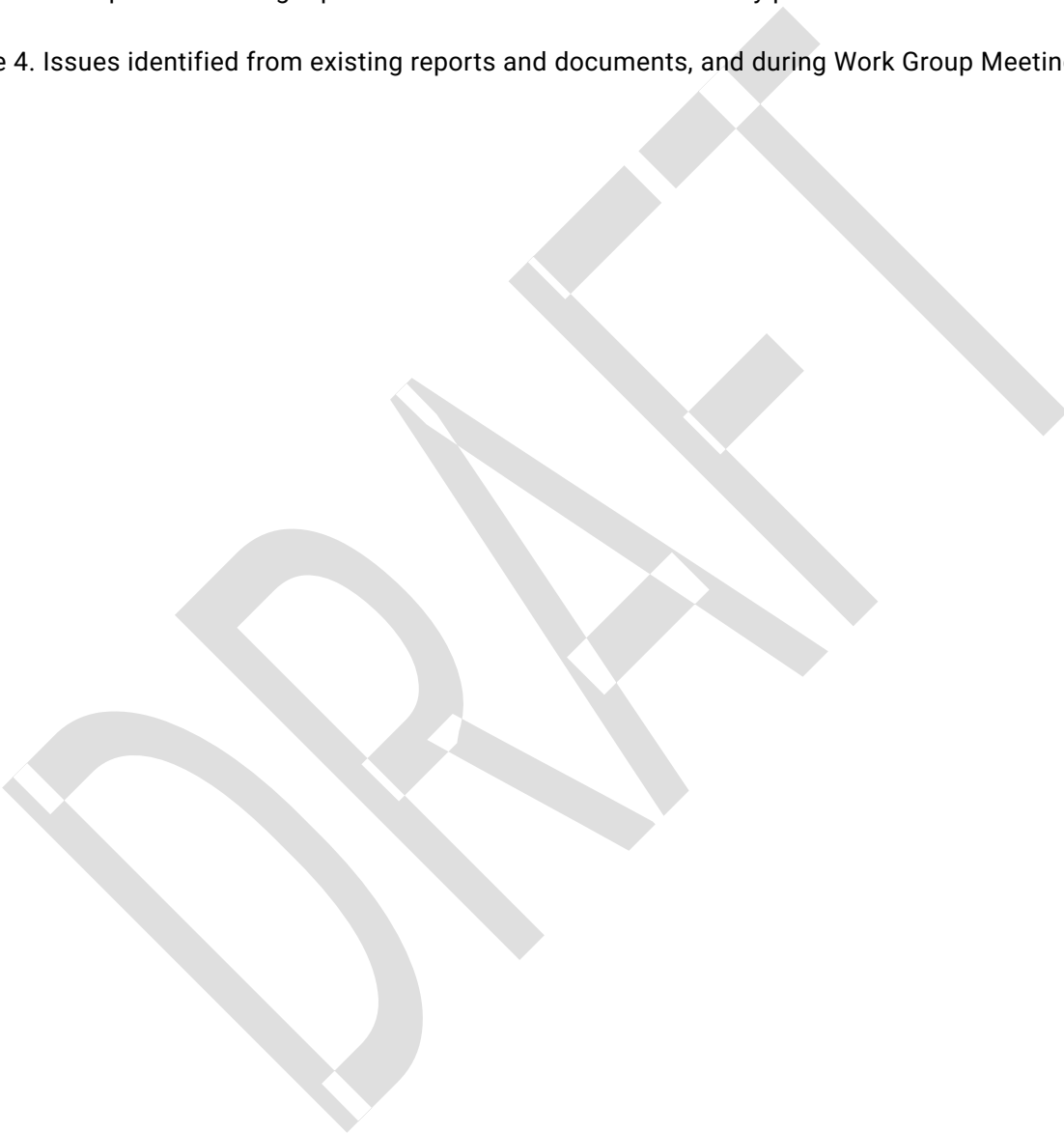
47 **List of Tables**

48 Table 1. Goals and objectives of the 1995 CCMP..... 8

49 Table 2. Revised CCMP goals and objectives..... 11

50 Table 3. Examples of existing reports and documents used to identify potential issues..... 13

51 Table 4. Issues identified from existing reports and documents, and during Work Group Meeting 1..... 15



LIST OF ABBREVIATIONS

<u>Abbreviation</u>	<u>Definition</u>
CCMP	Comprehensive Conservation Management Plan
CHMP	Comprehensive Habitat Management Plan
CPRA	Coastal Protection and Restoration Authority
CWA	Clean Water Act
EC	Executive Committee
EPA	Environmental Protection Agency
HSDRRS	Hurricane Storm Damage Risk Reduction System
LPBF	Lake Pontchartrain Basin Foundation
MC	Management Conference
MRGO	Mississippi River Gulf Outlet
PDT	Plan Development Team
PRP	Lake Pontchartrain Basin Restoration Program

INTRODUCTION

55 The importance of environmental issues in the Pontchartrain Basin (also referred to as “the Basin”) was
56 recognized nationally through the establishment of the Lake Pontchartrain Basin Restoration Program (PRP)
57 in 2000. This led to substantial progress on key environmental issues in the basin, guided by the
58 Comprehensive Management Plan (CCMP) developed in 1995 (Lake Pontchartrain Basin Foundation (LPBF),
59 1995). Much has changed in the Pontchartrain Basin since the current CCMP was developed. As such, there
60 is a tremendous need for an updated Comprehensive Conservation and Management Plan (CCMP) to identify
61 important issues, guide actions and research, and prioritize funding for environmental improvement projects
62 and programs within the basin.

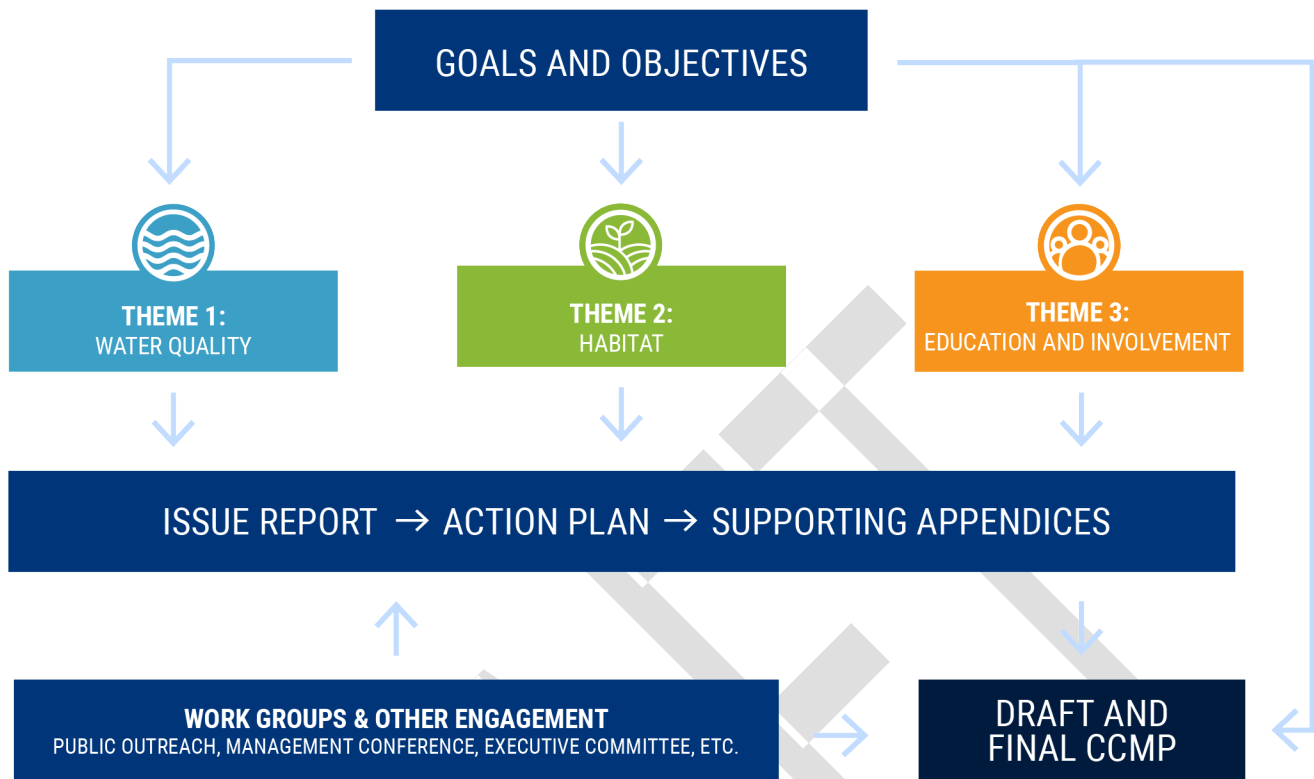
The purpose of the Lake Pontchartrain Basin Restoration Program is to restore the ecological health of the Basin by developing and funding restoration projects and related scientific and public education projects.

63 This report outlines the process being used to revise the 1995 CMP and the companion 2006 Comprehensive
64 Habitat Management Plan (CHMP) (Lake Pontchartrain Basin Foundation (LPBF), 2006), to be finalized in
65 2026. The process is founded on building consensus on foundational elements like objectives and actions.
66 Revising the CCMP requires looking back to the core components of the previous iteration to understand
67 what changes may need to be made and leveraging stakeholders’ expertise and knowledge to gain context
68 beyond the current CCMP’s text.

Comprehensive Conservation and Management Plans (CCMPs) are developed and implemented in keeping with section 320 of the Clean Water Act (CWA). They are long-term plans that contain sustained actions to protect and restore water quality and living resources. CCMPs identify a study area or geographic boundary within which the plan is focused, and actions are implemented under Section 320 of the Clean Water Act. The challenges and actions in the CCMP reflect the study area and are determined by local, city, state, federal, private, and non-profit stakeholders.

OVERALL FRAMEWORK

70 The development of the draft CCMP entails a series of steps that build on each other, enabling the Plan
71 Development Team (PDT) to engage with the public and members of the Management Conference (MC) and
72 the Executive Committee (EC), and Work Groups comprised of subject matter experts, as they build toward a
73 draft and final CCMP. Figure 1 shows the overall approach that is described in more detail in later sections.



74

75

Figure 1. Overall framework for CCMP revision.

76

GOALS AND OBJECTIVES

77

The 1995 CCMP included four goals each with several supporting objectives. These are listed in Table 1.

78

Table 1. Goals and objectives of the 1995 CCMP.

GOAL	OBJECTIVES
<p>Plan Implementation:</p> <p>Develop an organizational structure for the Basin wide cleanup effort which will promote coordination among public and private entities whose actions affect the use, restoration, and/or preservation of the Lake Pontchartrain Basin.</p>	<ol style="list-style-type: none"> 1. Promote coordination among public and private entities whose actions affect or could affect the use, restoration, and/or preservation of the Pontchartrain Basin. 2. Establish a mechanism to ensure public empowerment and participation in the education and planning process.

GOAL	OBJECTIVES
<p>Water Quality:</p> <p>To improve Basin water quality through a comprehensive program of point and nonpoint pollutant source reduction that targets urban runoff, sewage, industrial pollution, agricultural runoff and saltwater intrusion.</p>	<ol style="list-style-type: none"> 1. Provide a technical basis for the formulation of water quality improvement actions through water quality monitoring, needs assessment and research. 2. Reduce adverse impacts of urban runoff upon Basin water quality. 3. Eliminate sewage-related pollution impacts on water quality. 4. Reduce impacts of Industrial and commercially generated pollution on water quality. 5. Reduce environmental problems associated with agricultural practices. 6. Reduce impacts of saltwater intrusion on water quality.
<p>Education/Public Participation:</p> <p>Educate the public on a broad array of issues involving pollution in the Basin in order to encourage active public/private participation in cleanup and to deter further environmental degradation.</p>	<ol style="list-style-type: none"> 1. Develop and/or distribute a comprehensive array of educational materials for use in environmental education programs. 2. Increase availability of appropriate educational materials to all residents of the Basin. 3. Promote grassroots public participation In Basin cleanup. 4. Promote environmental education and grassroots involvement of Children in Basin cleanup. 5. Promote environmental education and grassroots involvement of multicultural groups In Basin cleanup.
<p>Essential Habitat:</p> <p>Protect and restore land-based and aquatic critical habitat in the Pontchartrain Basin</p>	<ol style="list-style-type: none"> 1. Reduce the environmental impacts of saltwater intrusion in the Pontchartrain Basin. 2. Reduce and/or prevent loss of wetland areas within the Basin and restore degraded areas where possible. 3. Prevent or reduce the impact of shoreline erosion within the Basin. 4. Reduce and/or prevent loss of SAV areas within the Basin and restore these areas where possible. 5. Protect and restore essential habitat and rare natural communities. 6. Design, develop, and oversee a system of parks and wildlife preserves that protects the Basin's essential habitat while allowing for recreational and educational activities. 7. Encourage the development of efficient transportation systems that minimize adverse environmental impacts to the Basin's critical areas. 8. Restore and protect the primary nursery areas in the Basin In order to maintain long-term, sustainable fisheries.

79 In addition, the 2006 CHMP included the following mission statement:

80 *“Given that the mission of the LPBF is to restore and conserve the natural resources of the Pontchartrain Basin,*
81 *the Comprehensive Habitat Management Plan (CHMP) should provide a blueprint to execute this mission by*
82 *providing general guidance as well as specific actions deemed appropriate to best restore and conserve the*
83 *natural habitats of the Pontchartrain Basin within a 50 to 100 year time frame. The CHMP provides a selection*
84 *of goals, strategies and methods based on the collective expertise of natural resource specialists who share*
85 *LPBF’s mission. The CHMP report includes recommendations and goals that are potentially far-reaching,*
86 *visionary, and wherever possible, coupled with strategies that are most likely to align resources required to*
87 *achieve the LPBF mission.”*

88 The CHMP also notes that the habitat component of the CHMP does not include water quality for human
89 health as a goal since this was covered by other sections of the 1995 CCMP.

90 In considering how these goals and objectives may need to be revised to be pertinent to the present-day
91 Pontchartrain Basin, the PDT identified several key issues that the 1995 report addressed that have changed
92 in nature or magnitude as well as new issues and challenges related to waters and habitats. These include:

- 93 • Closure of the Mississippi River Gulf Outlet (MRGO) in 2009
- 94 • Delisting of several water bodies due to improving water quality
- 95 • Relatively frequent openings of the Bonnet Carré spillway in the last decade
- 96 • Ongoing wetland restoration in the basin through the efforts of the Coastal Protection and
97 Restoration Authority (CPRA) including the River Reintroduction to Maurepas Swamp project
- 98 • The construction of the Hurricane Storm Damage Risk Reduction System (HSDRRS) around metro
99 New Orleans as well as other levees in progress or planned

100 In addition to these basin-specific issues, several issues that were barely mentioned in the mid-1990s are
101 now front and center of many discussions about how to plan for future environmental management. These
102 include environmental change and vulnerability, nature-based solutions, and emerging contaminants.

103 These topics and issues were considered during the review and revision of the goals and objectives for the
104 revised CCMP. Further, the purpose of the program provided a focus on ecological health, as expressed
105 through water quality and habitat issues, as well as the need to provide a foundation for restoration projects
106 and related scientific and public education projects.

107 The goals and objectives in Table 2 have been reviewed with Environmental Protection Agency (EPA) and the
108 EC of the MC. The numbering of the goals in Table 2 does not imply prioritization. It is included simply to
109 support reference to them in discussion and reporting (e.g., to relate them to proposed Actions).

110 **Table 2. Revised CCMP goals and objectives.**

111 Note: WQ=Water Quality, H=Habitat, and E=Education and Involvement.

GOAL	OBJECTIVES
<p>Goal 1: Water Quality</p> <p>Improve Pontchartrain Basin water quality through point and nonpoint pollutant source reduction to support ecological health.</p>	<p>WQ1. Provide a technical basis for the formulation of water quality improvement actions through water quality monitoring, needs assessment, and research.</p> <p>WQ2. Reduce adverse impacts of runoff; sewage; and agricultural, industrial, and commercial activities by improving stormwater management, promoting best management practices, and implementing restoration projects.</p>
<p>Goal 2: Habitat</p> <p>Promote sustainability of important land-based and aquatic habitat in the Pontchartrain Basin.</p>	<p>H1. Reduce loss of wetlands and restore the hydrologic exchanges that sustain them where possible.</p> <p>H2. Promote sustainable aquatic habitats, including SAV, to support diverse native flora and fauna.</p> <p>H3. Manage invasive species to reduce impacts to ecological health.</p> <p>H4. Protect and restore habitat for species of greatest conservation need and threatened natural communities.</p>
<p>Goal 3: Education and Involvement</p> <p>Increase awareness of current and future ecological health issues in the Pontchartrain Basin to encourage active participation in efforts to increase environmental sustainability.</p>	<p>E1. Educate the public on the effects of the changing ecological health of the Basin to promote responsible stewardship.</p> <p>E2. Identify and promote local efforts to improve the ecological health of the Basin.</p> <p>E3. Promote increased public participation in water quality improvement and habitat restoration projects.</p>

112 **WORK GROUPS**

113 Work Groups are an essential part of revising the CCMP. Their role is to offer input and feedback
 114 throughout the process related to specific topical areas or planning elements that directly align with the
 115 group’s expertise. This involved refining the key issues, providing input on/access to key information about
 116 the basin, supporting the development of potential actions, reviewing the issue report and other contextual

117 materials generated by the team, reviewing the action plan, and garnering engagement and/or support from
118 their networks for the CCMP.

119 Four Work Groups were established:

- 120 • Water Quality
- 121 • Habitats
- 122 • Working Lands and Waters/Land Use
- 123 • Resilient Communities

124 Efforts were made to ensure Work Group membership was diverse, representing an array of interests within
125 the basin. Members volunteer their time. Further information on the nature of their work is described below
126 under Issue Report and Action Plan. The Work Groups met together for an initial, introductory meeting, and
127 subsequent meetings were held in person or virtually.

128 **ISSUE REPORT**

129 The Issue Report includes four main chapters as well as an Executive Summary and an Introduction. The
130 main topic chapters are:

- 131 • Basin Characterization
- 132 • Water Quality
- 133 • Habitat
- 134 • Resilient Communities

135 The Basin Characterization chapter provides contextual information on aspects of the natural environment,
136 the human environment, and climate vulnerability that is referenced in the other chapters. Three of the
137 chapters align directly with the focus of Work Groups. Issues identified by the Working Lands and
138 Waters/Land Use Work Group cross several of the chapters and provided insight into commercial aspects of
139 the environment for the Habitat chapter.

140 There are three components to the development of the Issue Report, which are described below. No new
141 primary data collection was conducted (except for Work Group and public feedback on various aspects of
142 the plan), but the identification of potential data gaps is a key outcome of this work and is examined in
143 the Monitoring Report (CCMP Appendix E).

144 **Review of Previous Plans and Documents**

145 Initial work to develop the Issue Report involved the review of various existing reports and documents. These
146 were identified based on the experience of the PDT. Examples of these sources, and with which Work Group
147 they were discussed, are shown in Table 3. These sources were supplemented through discussion with Work
148 Group members and other experts as well as through targeted research on issues identified.

149 **Table 3. Examples of existing reports and documents used to identify potential issues.**

150 Note: x indicates that a report/document contained issues related to that topic; n/a indicates that it did not.

SOURCE	REPORT	WATER QUALITY	HABITAT	WORKING LANDS AND WATERS/LAND USE	RESILIENT COMMUNITIES
Federal	Conservation Management Plan (1995)	x	x	x	x
Federal	Comprehensive Habitat Management Plan (2006)	x	x	x	n/a
Federal	Bayou Sauvage Habitat Management Plan	n/a	x	n/a	n/a
Federal	Lower Mississippi River Comprehensive Management Study	x	x	x	n/a
Federal	Tangipahoa Parish Feasibility Study Environmental Appendix	x	x	n/a	n/a
Gulf States	Governor's Action Plan (2021) GOMA	x	x	n/a	x
State	Coastal Master Plan	x	x	x	x
State	Reports from LDEQ, LDWF, other state agencies	x	n/a	x	n/a
Parish	Livingston Parish Master Plan	n/a	x	n/a	x
Parish	St. Charles Comprehensive Plan	n/a	x	n/a	x
Parish	St. Tammany Gap Analysis	n/a	x	n/a	x
Parish	Ascension Storm Water Management Program Plan	x	n/a	n/a	n/a
Parish	Jefferson Parish Coastal Strategic Action Plan and Watershed Management Plan	x	x	n/a	x

SOURCE REPORT		WATER QUALITY	HABITAT	WORKING LANDS AND WATERS/LAND USE	RESILIENT COMMUNITIES
Parish	Plaquemines Parish Comprehensive Master Plan	x	x	n/a	n/a
Other	Peer-reviewed literature	x	x	x	x

151 Other parish plans and reports, including those from St. John the Baptist, St. Helena, and Iberville parishes,
 152 were reviewed, but no issues were identified. Additionally, the Louisiana Trustee Implementation Group
 153 Restoration Plan and Environmental Assessment #7: Wetlands, Coastal, and Nearshore Habitats and Birds;
 154 the Louisiana Trustee Implementation Group Restoration Plan and Environmental Assessment #8: Wetlands,
 155 Coastal, and Nearshore Habitats; and the Louisiana Trustee Implementation Group Final Restoration Plan
 156 and Environmental Assessment #4: Nutrient Reduction (Nonpoint Source) and Recreational Use were also
 157 reviewed.

158 Draft List of Issues

159 The review of existing documents and reports generated approximately 170 different issues, some of which
 160 were described in more than one report or document. These were reviewed for contemporary relevance (e.g.,
 161 issues previously related to salinity intrusion through MRGO were removed as no longer relevant), reducing
 162 the list to approximately 100.

163 These issues were partitioned by the Work Group so they could be summarized for the first Work Group
 164 meeting to provide context. The summary points discussed initially with each Work Group are shown in Table
 165 4. Table 4 also shows additional issues, or areas of emphasis, arising from the Work Group discussions.

Table 4. Issues identified from existing reports and documents, and during Work Group Meeting 1.

WORK GROUP	ISSUES IDENTIFIED FROM REPORTS AND DOCUMENTS	ISSUES ADDED/EMPHASIZED BY WORK GROUP
<p>Water Quality</p>	<ul style="list-style-type: none"> • Hydrologic modification: Saltwater intrusion (surface); leveeing; canals; spillway • Runoff and sewage: Stormwater runoff; agricultural and dairy runoff; leakage from home and municipal septic systems • Pollutants: Nutrients – algal blooms; bacteria; metals; organic contaminants • Sedimentation: Sand and gravel mining; logging; land use changes 	<ul style="list-style-type: none"> • Individual wastewater systems – impaired or non-compliant • Lack of connection to river – hydrology • Pollutant concentration versus flow – TMDL • Dissolved oxygen, mosquitoes
<p>Habitats</p>	<ul style="list-style-type: none"> • Habitat loss – lake and estuary <ul style="list-style-type: none"> ☞ Loss of tidal wetlands – forested and herbaceous ☞ Reduction in SAV – lake and outer estuary • Habitat loss - uplands <ul style="list-style-type: none"> ☞ Upland forests – alteration of flora and fauna communities ☞ Loss of riverine bank vegetation • Species of greatest conservation need - <ul style="list-style-type: none"> ☞ <i>Threatened/Endangered:</i> Gulf sturgeon (<i>Acipenser oxyrinchus desotoi</i>); Louisiana black bear (<i>Ursus americanus luteolus</i>); pallid sturgeon (<i>Scaphirhynchus albus</i>) ☞ Other Species of Greatest Conservation Need • Invasives: Privet hedge (<i>Ligustrum sinense</i>); Chinese tallow tree (<i>Triadica sebifera</i>); cogon grass (<i>Imperata spp.</i>); water hyacinth (<i>Eichhornia crassipes</i>); giant salvinia (<i>Salvinia molesta</i>); common salvinia (<i>Salvinia minima</i>); Eurasian watermilfoil (<i>Myriophyllum spicatum</i>) 	<ul style="list-style-type: none"> • Loss/change of habitat • Connectivity • Weather/climate • Species migration/threats • Invasives • Salinity issues

WORK GROUP	ISSUES IDENTIFIED FROM REPORTS AND DOCUMENTS	ISSUES ADDED/EMPHASIZED BY WORK GROUP
Working Lands and Waters/Land Use	<ul style="list-style-type: none"> • Land use change affecting habitat and water quality: Timber (loss of longleaf pine forests and habitats); agriculture and dairy; mining (shell, sand and gravel); oil and gas; increased use of Bonnet Carre Spillway; increased frequency, intensity of flooding in Pearl River, other Basin rivers and bayous; subsidence in coastal marshes and swamps; and sediment accretion and marsh creation • Industry opportunities: Timber; agriculture and dairy; mining; oil and gas; fishing • Recreational opportunities: WMAs; federal lands; city parks; waterways with recreational designated use • Boat Launches, access roads, public piers 	<ul style="list-style-type: none"> • Lack of stormwater water quality consideration in developed areas and construction sites • Farmers lack funds to implement water quality best management practices without Farm Bill subsidies or support from other programs • National versus state and local contributions and responsibility for addressing water quality issues • Loss of native grasses and associated ecosystem benefits • Lack of green infrastructure and nature-based solution implementation
Resilient Communities	<ul style="list-style-type: none"> • Lack of comprehensive educational materials for educational efforts • Insufficient grassroots public participation and environmental education efforts • Lack of a comprehensive system of parks and wildlife preserves to protect the Basin's essential habitats while supporting recreation and education • Lack of coordination among public and private entities negatively affects the use, restoration, and preservation of the Pontchartrain Basin • Inadequate public empowerment and participation in the education and planning process for environmental initiatives • Little public access to open land for recreation 	<ul style="list-style-type: none"> • Lack of dedicated resources for resilience and inconsistent efforts across the basin due to inconsistent plans for resilience and local entities being unaware of the potential funding opportunities available • Lack of public awareness and involvement in conservation efforts • Inadequate access to recreational opportunities • Flood and storm surge risks associated with tropical events due to a lack of coordinated event response • Water Management: Economic and Resilience Impacts due to local shortage in workforce and lack of awareness of opportunities • Local struggles with tourism as an economic driver but local burden • Inadequate access to subsistence fishing opportunities

168 Development of the Issue Report

169 The Issue Report (Lake Pontchartrain Basin Restoration Program, 2025) is based on a compilation of
170 available data or use of existing compiled sources and includes analysis of temporal and spatial patterns
171 for key metrics of interest. The report also identifies potential causal mechanisms for changes observed to
172 provide context for decision-making. The goal is that the report is rooted in science and technical
173 information. It is designed to provide a foundation for summaries of the issues in the main CCMP that will
174 convey to a wide audience the changes that are occurring, the reason for the changes, and the potential
175 consequences of the changes to the extent that information is available to support these determinations.
176 For example, if analysis of water quality data indicated an increase in fecal coliforms, the report indicates
177 potential causes of that increase (e.g., leaking septic tanks, sewer malfunctions) and discusses the
178 consequences of the pollution (e.g., loss of commercial and recreational use).

179 The chapters of the report are based on up-to-date monitoring data, technical papers, information on
180 environmental change and vulnerability, state of the basin reports, indicator reports, and other information.

181 The 1995 CCMP was supported by the companion 2006 CHMP. An updated CHMP has not been specifically
182 developed to accompany the revised CCMP. Rather, habitat issues are addressed in a chapter of the Issue
183 Report, as well as in the Action Plan chapter of the CCMP and the Habitat Protection/Restoration Strategy
184 (CCMP Appendix F; Figure 1).

185 As Issue Report chapters were developed, the PDT provided briefings to the relevant Work Group, and
186 members provided ideas on data sources, existing literature, causal mechanisms, and any other relevant
187 components. Three meetings of each Work Group were held over the course of this task: at the initiation to
188 identify issues of concern, when a draft issue report was available, and after a near-final issue report had
189 been made available that was revised based on their comments from the draft. These meetings served as an
190 opportunity for members to provide input on framing the issues and the report structure as well as to
191 discuss the evaluation of issues as it was being conducted.

192 CLIMATE VULNERABILITY ASSESSMENT

193 Several of the issues identified in the development of the Issue Report involved aspects of climate including
194 droughts, storms, and changing environmental conditions. A climate vulnerability assessment (Appendix D)
195 was completed to evaluate how future environmental change may affect the Pontchartrain Basin. Potential
196 climate stressors were identified based on USEPA's *Being Prepared for Climate Change* workbook (2014).
197 These were: warmer summers, warmer winters, warmer water, increasing drought, increasing storminess, sea
198 level rise, and ocean acidification. Several potential risks were identified for water quality and habitat based
199 on climate vulnerability assessments from other similar areas and local knowledge. Risks were rated based
200 on existing available information and expert knowledge in terms of the following:

- 201 • Consequence - the effect the risk would have on the CCMP's goals and objectives were it to occur
- 202 • Likelihood - the chance of the risk actually occurring (i.e., probability) and how likely it is to affect the
- 203 CCMP's goals and objectives

- 204 • Spatial Extent – the proportion of the CCMP’s geographic area that the risk will affect
- 205 • Time Horizon –the time until the problem begins to have an impact

206 Examples of how the climate risks could impact the CCMP Action Plan were developed, along with ideas
207 about how CCMP actions may need to be adapted in the face of climate risks.

208 **ACTION PLAN**

209 Issues identified in the previous task are sometimes under the jurisdiction of an existing agency or were a
210 specific focus for different organizations and entities. For example, federal or state programs may already
211 be available to address some of the issues identified, and some local jurisdictions may have already
212 identified effective actions to address important issues in their parish master plans. With support from the
213 Work Groups, the PDT developed an inventory of possible and/or planned actions that were pulled from
214 relevant, existing local, state, and federal plans and any other relevant organizations. The inventory served
215 as a starting point for developing the action plan. New actions were developed by the PDT with the Work
216 Groups, as needed, to fully address the issues.

217 An action under the CCMP can take many forms. For some emerging issues, actions may take the form of
218 studies or targeted data collection where insufficient information is available to fully identify causal
219 mechanisms and effective actions. Some actions may entail strategic activity across the basin or involve
220 policy changes rather than on-the-ground projects.

221 Potential actions were evaluated and selected in conjunction with the Work Groups using best
222 professional judgment. Some actions identified from existing plans (e.g., The Amite River Basin Commission
223 Master Plan) were originally developed based on quantitative analysis.

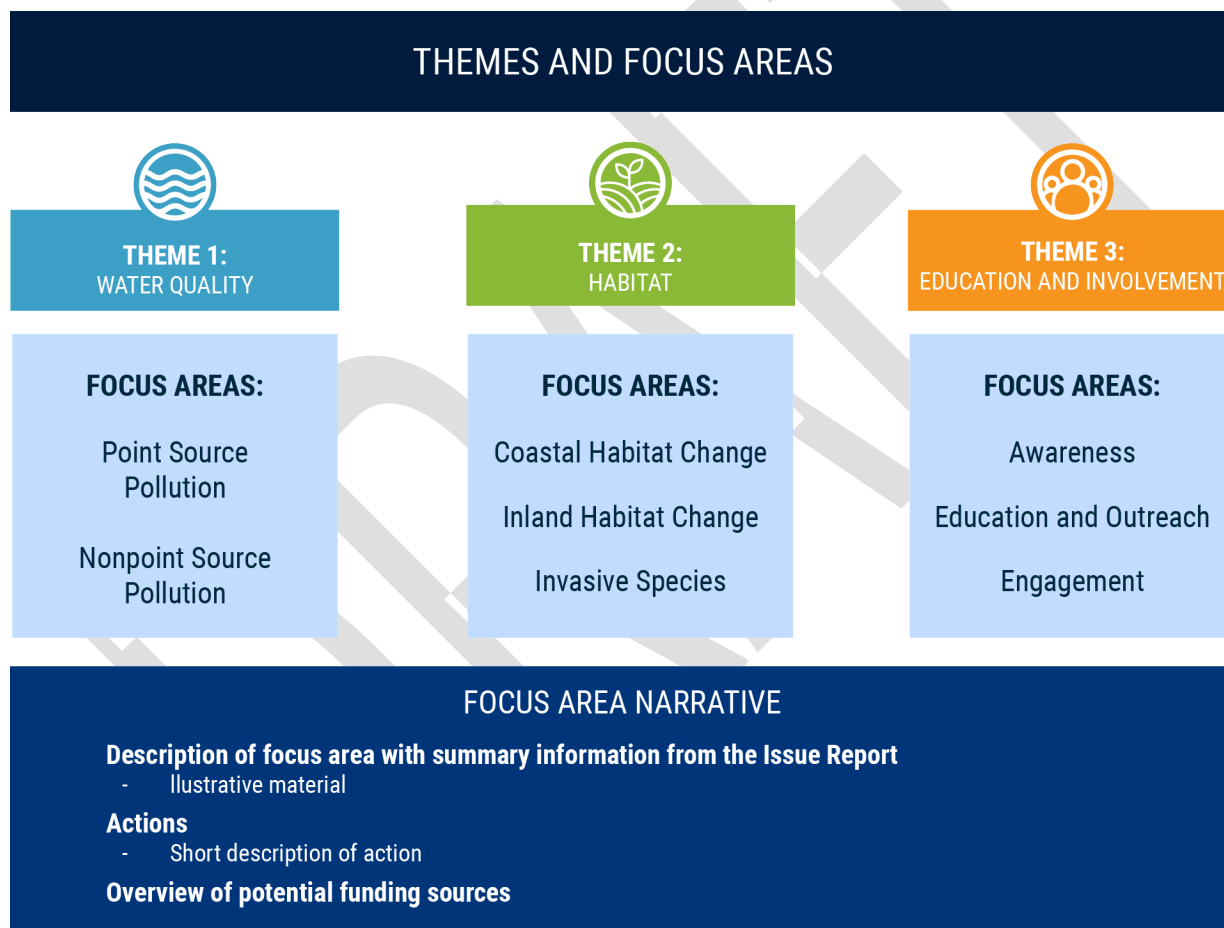
224 The Action Plan is structured around three themes, each of which has two or three focus areas:

- 225 • Theme: Water Quality
 - 226 ○ Focus Area: Point Source Pollution
 - 227 ○ Focus Area: Nonpoint Source Pollution
- 228 • Theme: Habitat
 - 229 ○ Focus Area: Inland Habitat Change
 - 230 ○ Focus Area: Coastal Habitat Change
 - 231 ○ Focus Area: Invasive Species
- 232 • Theme: Education and Involvement
 - 233 ○ Focus Area: Awareness
 - 234 ○ Focus Area: Education and Outreach
 - 235 ○ Focus Area: Engagement

236 The themes link directly to the purpose of the PRP, and the focus areas reflect the key areas identified in the
237 Issue Report.

238 The Issue Report focused on Resilient Communities, but it seemed clear that progress on many of those
 239 issues is fundamentally hampered by gaps in accessible information and a lack of meaningful
 240 opportunities for residents to participate in planning. Thus, the related Action Plan theme is titled
 241 Education and Involvement. This name better reflects the foundational actions required to build true,
 242 lasting resilience across the basin.

243 In the Action Plan, each Focus Area is supported by a description that summarizes key information from the
 244 Issue Report with illustrative material as appropriate, and a list of Action Items. For each Focus Area, a
 245 description of potential funding sources is also included. Figure 2 shows the hierarchical structure of the
 246 Action Plan.



247
 248 **Figure 2. Outline of Action Plan structure.**

249 Action Items will be listed in the Focus Area description with a brief outline of the action and what it is
 250 expected to achieve. A summary table will be used to link Actions to objectives of the CCMP, identify likely
 251 partners; the timeframe for implementation; estimates for the range of cost, and performance measures
 252 so the action can be tracked.

253 The revised CCMP also tracks actions in the 1995 CCMP against the actions in the revised CCMP, noting
254 where there are similar or related actions or where circumstances have changed to make the 1995 action no
255 longer necessary.

256 **SUPPORTING STRATEGIES AND MONITORING** 257 **REPORT**

258 **Habitat Protection/Restoration Strategy**

259 This strategy was created to integrate the habitat components of the revised CCMP contained within the
260 Basin Characterization and Habitat chapters of the Issue Report and the habitat actions within the Action
261 Plan into a habitat restoration/protection strategy. This strategy can help guide investments of the PRP as
262 well as serve to inform actions of other programs operating in the PRP's geographic extent by providing a
263 single resource to access habitat-related information in the CCMP.

264 The actions are organized by habitat type within each of the Focus Areas used in the Action Plan (e.g.,
265 forested wetlands, tidal aquatic habitat, etc., for Coastal Habitat Change). The strategy also includes a list of
266 potential funding sources that could support habitat protection and restoration.

267 **Communication/Outreach Strategy**

268 The Communication/Outreach Strategy aims to foster broad understanding and support for the PRP's CCMP
269 by clearly conveying its importance and ongoing efforts, cultivating informed participation, and ensuring its
270 successful implementation. Effective outreach and communication are fundamental to the successful
271 implementation of the updated CCMP. The Communication/Outreach Strategy outlines an approach to foster
272 broad understanding and support for the plan's objectives and actions.

273 The strategy discusses guiding principles and specific goals and objectives for communication and
274 outreach. Key elements of communication and outreach are discussed:

- 275 • Branding and Consistent Messaging
- 276 • Dynamic Information Sharing
- 277 • Online Resource Management
- 278 • Educational Material and Content Creation
- 279 • Content Distribution
- 280 • Programs and Other Engagements

281 Target Audiences are also identified. The PRP's wide range of interested people and groups can all
282 contribute to the program's success in different ways; maximizing the success of all involves effective
283 communication and outreach. The diverse communication channels the PRP can leverage to disseminate
284 information, foster engagement, and gather valuable feedback are also outlined. From direct, in-person
285 interactions that allow for real-time dialogue and community involvement, to accessible digital platforms that

286 broaden reach and provide flexible opportunities, a multi-faceted approach ensures that vital information
287 reaches the target audience. These include:

- 288 • In-Person Meetings
- 289 • Webinars
- 290 • Social Media Outlets
- 291 • Website Content
- 292 • Email Campaigns

293 **Monitoring Report**

294 The Monitoring Report serves as a key component of the revised CCMP by presenting a summary of
295 monitoring efforts relevant to the proposed water quality, habitat, and education and involvement work. The
296 CCMP goals, objectives, and actions serve as the foundation for identifying appropriate monitoring foci.
297 Each focus has at least one objective and action that is related to it, although in many cases, a single
298 monitoring focus may relate to multiple objectives and actions. Associated with each monitoring focus are
299 specific monitoring parameters, these are the measurable components used to track environmental or
300 programmatic conditions. For example, *E. coli* and fecal coliform concentrations might serve as parameters
301 for a focus related to raw sewage contamination.

302 The Monitoring Report then identifies current relevant data collection efforts. These include programs
303 implemented by academic institutions, government agencies (including federal, state, and local), non-profit
304 organizations, and private partners. These efforts are organized by their relevance to three primary
305 monitoring focus areas: water quality (24 programs), habitat (31 programs), and education and involvement
306 (25 programs). For each program or dataset, tables provide key details including the lead agency or
307 managing entity; the related CCMP monitoring focus; the type of data collected; the sampling timeline,
308 sampling frequency, geographic coverage; and a link to any publicly available information or results.

309 The Monitoring Report identified 32 monitoring foci (9 water quality, 18 habitat, and 5 education and
310 involvement) included in this Monitoring Report. These foci were linked to 80 data collection programs (24
311 water quality, 31 habitat, and 25 education and involvement). Rather than establishing a single centralized
312 data collection and stewardship approach, the Monitoring Report points to the distributed model in which
313 partner organizations complete data collection and analysis based on their unique capabilities and expertise.
314 This approach promotes efficiency, leverages existing resources, and supports long-term data continuity
315 across the Pontchartrain Basin.

Through dedicated and consistent communication, the CCMP aims for a future in which every resident and visitor of the Pontchartrain Basin understands and actively contributes to its ecological health, fueled by consistent, clear, and compelling communication that fosters widespread participation and ensures the basin's vibrant ecological health for generations to come.

DRAFT AND FINAL CCMP

317 The draft CCMP document is organized into an Introduction and four major sections:

- 318 • Framework for Plan Revision. This section outlines the approach to CCMP revision, which has been
319 described in more detail above.
- 320 • Issues and Challenges. This section includes an Introduction that provides information about the
321 character of the Pontchartrain Basin, and sections on Water Quality, Habitat, and Education and
322 Involvement that summarize information in the Issue Report.
- 323 • Action Plan. This section provides context for the themes and focus areas, lists the actions, and
324 includes a summary table that links actions to the objectives of the CCMP. For each action, the
325 section identifies potential partners, the timeframe for implementation, estimates for the range of
326 costs, and performance measures so the action can be tracked. It also includes a high-level
327 comparison of the actions in the 2026 CCMP with those included in the 1995 CMP.
- 328 • Toward CCMP Implementation. This section discusses how various partners can contribute in
329 different ways to the implementation of the CCMP. It also offers ideas on how coordination and
330 collaboration can be maintained and how CCMP implementation can be tracked.

331 The main document is supported by several Appendices that provide technical detail and guidance including
332 this Framework Document (Appendix A), the Issue Report (Appendix B), a crosswalk of 1995 CCMP and 2006
333 CHMP actions to actions included in the 2026 Draft CCMP (Appendix C), a Climate Vulnerability Assessment
334 (Appendix D), the Supporting Strategies and the Monitoring Report (Appendix E-Appendix G), and an
335 Engagement Report (Appendix H).

336 The draft CCMP is being made available for public review for 60 days. It will be revised in response to
337 comments received before submitting to the Executive Committee, the Management Conference, and EPA for
338 approval. Documentation of how comments were addressed will be included in the final CCMP as an
339 additional appendix.

