

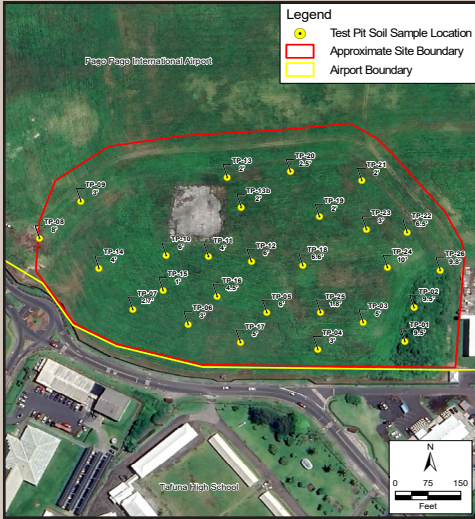


Region 9
Pacific Southwest

BROWNFIELDS TECHNICAL ASSISTANCE

Pago Pago-Tafuna Village Scrap Metal Depository, Pago Pago, Tutuila, American Samoa

August 2024



PROJECT SUMMARY

Community

Tafuna is the most populous village in American Samoa with about 7,800 residents. Tutuila is a historically overburdened and socially underserved island. The U.S. Environmental Protection Agency (EPA) places a high priority on providing Brownfields technical assistance for the benefit of communities facing these challenges.

Property Information

The property is in Tafuna, American Samoa, on the principal island of Tutuila. The property is within the boundary of the Pago Pago International Airport in Tafuna. The property is a former scrap metal yard that had a stockpile of about 1.66 million cubic feet of scrap metal. Cleanup of the property began in 2007 and by 2011 several tons of scrap metal had been removed. Buried debris and waste remain on the property.

Technical Assistance

EPA provides technical assistance to research historical property uses, conduct environmental sampling and identify potential environmental concerns. The EPA-funded environmental assessment evaluated potential contamination and conditions at the property considered for planned redevelopment or reuse. The assessment included scientific surveys and soil sampling. The assessment found benzo(a)pyrene, copper, lead, thallium, zinc, and asbestos at concentrations above Pacific Basin Screening Levels. The assessment estimated the amount and depth of the debris still on the property.

Recommendations

Address debris and contaminated soil by removing and disposing of the debris and soil off site or capping the debris and soils in place to limit exposure or further release to the environment. If soil is to be removed, then conduct further testing before disposal.

Future Use

The American Samoa Economic Development Authority plans to redevelop the property as part of a larger redevelopment plan for the Pago Pago International Airport to meet American Samoa's transportation, infrastructure, tourism, and economic needs.



Property Information

Address Pago Pago International Airport,
Tafuna, Tutuila, American Samoa

Size 7 acres

Technical Assistance Recipient

American Samoa Economic Development
Authority

<https://www.americansamoa.gov>

Contacts

Liu Lafaele
American Samoa Environmental Protection
Agency
(684) 633-2304
liu.lafaele@epa.as.gov

Lisa Hanusiak
U.S. Environmental Protection Agency
(415) 972-3152
hanusiak.lisa@epa.gov

EPA's Targeted Brownfields
Assessment Program is a technical
service to conduct environmental
assessments on brownfield sites:

www.epa.gov/brownfields