



JANET T. MILLS
GOVERNOR

STATE OF MAINE
DEPARTMENT OF ENVIRONMENTAL PROTECTION



MELANIE LOYZIM
COMMISSIONER

May 19, 2026

Mr. Greg Sherman
Houlton Water Company
Houlton, ME 04730

***Sent via electronic mail
Delivery confirmation requested***

RE: *Maine Pollutant Discharge Elimination System (MEPDES) Permit #ME0101290
Maine Waste Discharge License (WDL) Application #W002648-6D-H-R
Proposed Draft MEPDES Permit Renewal*

Dear Mr. Sherman,

Enclosed is a **proposed draft** MEPDES renewal permit and Maine WDL which the Department proposes to issue as a final document after opportunity for your review and comment. By transmittal of this letter, you are provided with an opportunity to comment on the proposed draft permit and its special and standard conditions. If it contains errors or does not accurately reflect present or proposed conditions, please respond to this Department so that changes can be considered.

By copy of this letter, the Department is requesting comments on the proposed draft permit from various state and federal agencies and from any other parties who have notified the Department of their interest in this matter.

The comment period begins today, Tuesday, May 19, 2026, and ends on Thursday, June 18, 2026. All comments on the proposed draft permit must be received in the Department of Environmental Protection office on or before the close of business **Thursday, June 18, 2026**. Failure to submit comments in a timely fashion may result in the proposed draft/license permit document being issued as drafted.

Comments in writing should be submitted to my attention at the following address:

Maine Department of Environmental
Protection Bureau of Water Quality
Division of Water Quality Management
17 State House Station
Augusta, ME 04333-0017

If you have any questions regarding the matter, please feel free to call me at 207-458-8706 or email me at Bekah.Farmer@Maine.gov

Letter to Mr. Greg Sherman

May 18, 2026

Page 2 of 2

Sincerely,

Bekah Farmer
Division of Water Quality Management
Bureau of Water Quality

Enclosure

cc: Laura Crossley, DEP
Gerard Charette, DEP
Wendy Garland, DEP
Kirk Ball, DEP
Gregg Wood, DEP
Lori Mitchell, DEP
Michael Cobb, USEPA
Rich Carvalho, USEPA
Kathryn Rosenberg, USEPA
Sean Mahoney, CLF
Shannon Hill, Mi'kmaq Nation
Department of Marine Resources
Sharri Venno, Houlton Band of Maliseet Indians

PERMIT SUMMARY (cont'd)

- accordance with Special Condition K, *Schedule of Compliance – Escherichia coli Bacteria & Total Residual Chlorine Limitations and Monitoring Requirements*;
3. Revising total residual chlorine effluent limitations in Special Condition B, *Effluent Limitations and Monitoring Requirements* based on updated dilution factors, to be applied three years and one day after permit issuance in accordance with Special Condition K, *Schedule of Compliance – Escherichia coli Bacteria & Total Residual Chlorine Limitations and Monitoring Requirements*;
 4. Establishing seasonal (June 1 to September 15) ambient phosphorous monitoring requirements in Special Condition B, *Effluent Limitations and Monitoring Requirements* based on the need for up-to-date data in accordance with 06-096 C.M.R. Ch. 583 during the years 2029 and 2030;
 5. Revising effluent monitoring frequency for total phosphorous from once per week to two times per month in Special Condition B, *Effluent Limitations and Monitoring Requirements*;
 6. Removing the requirement to report the weekly average of phosphorous in Special Condition B, *Effluent Limitations and Monitoring Requirements*, to remove redundancy;
 7. Revising footnotes in Special Condition B, *Effluent Limitations and Monitoring Requirements*, to be consistent with other MEPDES permits subsequent to HWC's August 22, 2016 permit;
 8. Revising WET modified acute and chronic thresholds in Special Condition B, *Effluent Limitations and Monitoring Requirements* based on updated dilution factors;
 9. Revising Special Condition C, *Narrative Effluent Limitations*, to be consistent with other MEPDES permits subsequent to HWC's August 22, 2016, permit;
 10. Removing the requirement in Special Condition I, *Monitoring and Reporting* to submit a physical copy of data submitted electronically for the Discharge Monitoring Reports (DMRs) to be consistent with other MEPDES permits subsequent to HWC's August 22, 2016, permit;
 11. Establishing Special Condition K, *Schedule of Compliance – Escherichia coli Bacteria & Total Residual Chlorine Limitations and Monitoring Requirements* in accordance with 06-096 C.M.R. Ch. 523 § 2(l)(4), to allow the permittee time to plan and implement projects to meet *E. coli* bacteria and TRC limitations and monitoring requirements established in this permitting action.

CONCLUSIONS

BASED on the findings in the attached PROPOSED Fact Sheet dated May 19, 2026, and subject to the Conditions listed below, the Department makes the following conclusions:

1. The discharge, either by itself or in combination with other discharges, will not lower the quality of any classified body of water below such classification.
2. The discharge, either by itself or in combination with other discharges, will not lower the quality of any unclassified body of water below the classification which the Department expects to adopt in accordance with State law.
3. The provisions of the State's antidegradation policy, *Classification of Maine waters*, 38 M.R.S. § 464(4)(F), will be met, in that:
 - (a) Existing in-stream water uses and the level of water quality necessary to protect and maintain those existing uses will be maintained and protected;
 - (b) Where high quality waters of the State constitute an outstanding national resource, that water quality will be maintained and protected;
 - (c) Where the standards of classification of the receiving waterbody are not met, the discharge will not cause or contribute to the failure of the waterbody to meet the standards of classification;
 - (d) Where the actual quality of any classified receiving waterbody exceeds the minimum standards of the next highest classification that higher water quality will be maintained and protected; and
 - (e) Where a discharge will result in lowering the existing water quality of any waterbody, the Department has made the finding, following opportunity for public participation, that this action is necessary to achieve important economic or social benefits to the State.
4. The discharges will be subject to effluent limitations that require application of best practicable treatment as defined in *Conditions of licenses*, 38 M.R.S. § 414-A(1)(D).

ACTION

THEREFORE, the Department APPROVES the above noted application of the HOULTON WATER COMPANY to discharge a monthly average of 1.5 million gallons per day of secondary treated wastewaters from the HWC facility to the Meduxnekeag River, Class B, in Houlton, Maine, SUBJECT TO THE ATTACHED CONDITIONS, and all applicable standards and regulations including:

1. *“Maine Pollutant Discharge Elimination System Permit Standard Conditions Applicable To All Permits,”* revised July 1, 2002, copy attached.
2. The attached Special Conditions, including any effluent limitations and monitoring requirements.
3. This permit becomes effective upon the date of signature below and expires at midnight five (5) years from the effective date. If a renewal application is timely submitted and accepted as complete for processing prior to the expiration of this permit, the authorization to discharge and the terms and conditions of this permit and all modifications and minor revisions thereto remain in effect until a final Department decision on the renewal application becomes effective. [*Maine Administrative Procedure Act*, 5 M.R.S. § 10002 and Department Rule *Concerning the Processing of Applications and Other Administrative Matters*, 06-096 C.M.R. Ch. 2 § 20(A) (effective September 15, 2024)]

PLEASE NOTE THE ATTACHED SHEET FOR GUIDANCE ON APPEAL PROCEDURES.

DONE AND DATED AT AUGUSTA, MAINE THIS ___ DAY OF _____, 2026.
DEPARTMENT OF ENVIRONMENTAL PROTECTION

BY: _____
For: MELANIE LOYZIM, Commissioner

Date of initial receipt of application: May 14, 2021
Date of application acceptance: June 1, 2021

This Order prepared by Bekah Farmer, BUREAU OF WATER QUALITY

SPECIAL CONDITIONS

A. AUTHORIZED DISCHARGES

The permittee is authorized to discharge only in accordance with: 1) the permittee's General Application for Waste Discharge Permit, accepted for processing on June 1, 2021; 2) the terms and conditions of this permit; and 3) only from Outfall #001A. Discharges of wastewater from any other point source are not authorized under this permit and must be reported in accordance with Standard Condition D(1)(f), *Twenty-four hour reporting*, of this permit.

SPECIAL CONDITIONS

B. EFFLUENT LIMITATIONS AND MONITORING REQUIREMENTS

1. The permittee is authorized to discharge **secondary treated municipal wastewater** from **Outfall #001A** to the Meduxnekeag River. Such discharges are limited and must be monitored by the permittee as specified below⁽¹⁾:

Effluent Characteristic	Discharge Limitations						Minimum Monitoring Requirements	
	Monthly Average	Weekly Average	Daily Maximum	Monthly Average	Weekly Average	Daily Maximum	Measurement Frequency	Sample Type
Flow <i>[50050]</i>	1.5 MGD <i>[03]</i>	---	Report MGD <i>[03]</i>	---	---	---	Continuous <i>[99/99]</i>	Recorder <i>[RC]</i>
BOD ₅ <i>[00310]</i>	375 lbs./day <i>[26]</i>	563 lbs./day <i>[26]</i>	626 lbs./day <i>[26]</i>	30 mg/L <i>[19]</i>	45 mg/L <i>[19]</i>	50 mg/L <i>[19]</i>	1/Week <i>[01/07]</i>	Composite ⁽²⁾ <i>[24]</i>
BOD ₅ Percent Removal ⁽³⁾ <i>[81010]</i>	---	---	---	85% <i>[23]</i>	---	---	1/Month <i>[01/30]</i>	Calculate <i>[CA]</i>
TSS <i>[00530]</i>	375 lbs./day <i>[26]</i>	563 lbs./day <i>[26]</i>	626 lbs./day <i>[26]</i>	30 mg/L <i>[19]</i>	45 mg/L <i>[19]</i>	50 mg/L <i>[19]</i>	1/Week <i>[01/07]</i>	Composite ⁽²⁾ <i>[24]</i>
TSS Percent Removal ⁽³⁾ <i>[81011]</i>	---	---	---	85% <i>[23]</i>	---	---	1/Month <i>[01/30]</i>	Calculate <i>[CA]</i>
Settleable Solids <i>[00545]</i>	---	---	---	---	---	0.3 mL/L <i>[25]</i>	3/Week <i>[03/07]</i>	Grab <i>[GR]</i>
<i>E. coli</i> Bacteria ⁽⁴⁾ <i>[31633]</i> (May 15 – September 30) Until three years after permit issuance	---	---	---	64 col/100 mL ⁽⁵⁾ <i>[13]</i>	---	427 col/100 mL ⁽⁶⁾ <i>[13]</i>	1/Week <i>[01/07]</i>	Grab <i>[GR]</i>
<i>E. coli</i> Bacteria ⁽⁴⁾ <i>[31633]</i> (April 15 – October 31) Beginning three years and one day after permit issuance	---	---	---	64 col/100 mL ⁽⁵⁾ <i>[13]</i>	---	236 col/100 mL ⁽⁶⁾ <i>[13]</i>	1/Week <i>[01/07]</i>	Grab <i>[GR]</i>
Total Residual Chlorine ⁽⁷⁾ <i>[50060]</i> Until three years after permit issuance	---	---	---	0.1 mg/L <i>[19]</i>	---	0.12 mg/L <i>[19]</i>	3/Week <i>[03/07]</i>	Grab <i>[GR]</i>

SPECIAL CONDITIONS

B. EFFLUENT LIMITATIONS AND MONITORING REQUIREMENTS (cont'd)

1. Outfall #001A (cont'd)

Effluent Characteristic	Discharge Limitations						Minimum Monitoring Requirements	
	Monthly Average	Weekly Average	Daily Maximum	Monthly Average	Weekly Average	Daily Maximum	Measurement Frequency	Sample Type
Total Residual Chlorine ⁽⁷⁾ [50060] Beginning three years and one day after permit issuance	---	---	---	0.05 mg/L [19]	---	0.08 mg/L [19]	3/Week [03/07]	Grab [GR]
pH [00400]	---	---	---	---	---	6.0 – 9.0 SU [12]	1/Day [01/01]	Grab [GR]
Mercury (Total) ⁽⁸⁾ [71900]	---	---	---	5.0 ng/L [3M]	---	7.4 ng/L [3M]	1/Year [01/YR]	Grab [GR]
Total Phosphorus ⁽⁹⁾ [00665] (June 1 – September 15)	Report lbs./day [26]	---	Report lbs./day [26]	250 µg/L [28]	---	500 µg/L [28]	2/Month ⁽¹⁰⁾ [02/30]	Composite ⁽²⁾ [24]
Total Phosphorus ⁽⁹⁾ [00665] (July 1 – September 15)	1.25 lbs./day ⁽¹¹⁾ [26]	---	---	---	---	---	1/Quarter [01/90]	Calculate [CA]

The italicized numeric values bracketed in the table above and in text on subsequent pages are code numbers that Department personnel utilize to code the monthly Discharge Monitoring Reports.

FOOTNOTES: See Pages 10 through 14 of this permit for applicable footnotes.

SPECIAL CONDITIONS

B. EFFLUENT LIMITATIONS AND MONITORING REQUIREMENTS (cont'd)

2. Whole effluent toxicity, analytical chemistry and priority pollutant testing requirements for **Outfall #001A⁽¹⁾**.

SURVEILLANCE LEVEL - Beginning upon permit issuance and lasting until Screening Level Testing commences, and commencing again upon the completion of Screening Level testing, the permittee must conduct testing as follows:

Effluent Characteristic	Discharge Limitations				Minimum Monitoring Requirements	
	Monthly Average	Daily Maximum	Monthly Average	Daily Maximum	Measurement Frequency	Sample Type
Whole Effluent Toxicity⁽¹²⁾						
Acute – NOEL						
<i>Ceriodaphnia dubia</i> (Water flea) [TDA3B]	---	---	---	Report % [23]	1/Year [01/YR]	Composite ⁽²⁾ [24]
<i>Salvelinus fontinalis</i> (Brook trout) [TDA6F]	---	---	---	Report % [23]	1/Year [01/YR]	Composite ⁽²⁾ [24]
Chronic – NOEL						
<i>Ceriodaphnia dubia</i> (Water flea) [TBP3B]	---	---	---	Report % [23]	1/Year [01/YR]	Composite ⁽²⁾ [24]
<i>Salvelinus fontinalis</i> (Brook trout) [TBQ6F]	---	---	---	Report % [23]	1/Year [01/YR]	Composite ⁽²⁾ [24]
Analytical Chemistry ^(13,14) [51477]	---	---	---	Report µg/L [28]	1/Year [01/YR]	Composite ⁽²⁾ / Grab [24]

FOOTNOTES: See Pages 10 through 14 of this permit for the applicable footnotes.

SPECIAL CONDITIONS

B. EFFLUENT LIMITATIONS AND MONITORING REQUIREMENTS (cont'd)

3. Whole effluent toxicity, analytical chemistry and priority pollutant testing requirements for **Outfall #001A⁽¹⁾**.

SCREENING LEVEL - Beginning in the calendar year 2030 and every five years thereafter if a timely request for renewal has been made and the permit continues in force, or is replaced by a permit renewal containing this requirement, the permittee must conduct testing as follows:

Effluent Characteristic	Discharge Limitations		Minimum Monitoring Requirements	
	Monthly Average	Daily Maximum	Measurement Frequency	Sample Type
Whole Effluent Toxicity⁽¹²⁾ Acute – NOEL <i>Ceriodaphnia dubia</i> (Water flea) [TDA3B] <i>Salvelinus fontinalis</i> (Brook trout) [TDA6F]	---	Report % [23]	1/Quarter [01/90]	Composite ⁽²⁾ [24]
	---	Report % [23]	1/Quarter [01/90]	Composite ⁽²⁾ [24]
	---	Report % [23]	1/Quarter [01/90]	Composite ⁽²⁾ [24]
	---	Report % [23]	1/Quarter [01/90]	Composite ⁽²⁾ [24]
Chronic – NOEL <i>Ceriodaphnia dubia</i> (Water flea) [TBP3B] <i>Salvelinus fontinalis</i> (Brook trout) [TBQ6F]	---	Report % [23]	1/Quarter [01/90]	Composite ⁽²⁾ [24]
	---	Report % [23]	1/Quarter [01/90]	Composite ⁽²⁾ [24]
Analytical Chemistry ^(13,14) [51477]	---	Report µg/L [28]	1/Quarter [01/90]	Composite ⁽²⁾ / Grab [24]
Priority Pollutants ^(14,15) [50008]	---	Report µg/L [28]	1/Year [01/YR]	Composite ⁽²⁾ / Grab [24]

4. **AMBIENT MONITORING** – The permittee must perform ambient receiving water monitoring for the Meduxnekeag River in Houlton, Maine. Such sampling must be monitored by the permittee as specified below⁽¹⁾:

Ambient Receiving Water Characteristic	Monthly Average	Measuring Frequency	Sample Type
Total Phosphorous ⁽⁹⁾ (June 1 to September 15) [00665] 2029 to 2030	Report (mg/L) [19]	2/Month ⁽¹⁰⁾ [01/30]	Grab [GR]

FOOTNOTES: See Pages 10 through 14 of this permit for the applicable footnotes.

SPECIAL CONDITIONS

B. EFFLUENT LIMITATIONS AND MONITORING REQUIREMENTS (cont'd)

FOOTNOTES:

1. **Sampling** – Any change in sampling location must be approved by the Department in writing. HWC must conduct sampling and analysis in accordance with; a) methods approved by 40 Code of Federal Regulations (C.F.R.) Part 136, b) alternative methods approved by the Department in accordance with the procedures in 40 C.F.R. Part 136, or c) as otherwise specified by the Department. Samples that are sent out for analysis must be analyzed by a laboratory certified by the State of Maine's Department of Health and Human Services for wastewater. Samples that are sent to a POTW pursuant to *Waste discharge licenses*, 38 M.R.S. § 413 are subject to the provisions and restrictions of *Maine Comprehensive and Limited Environmental Laboratory Accreditation Rules*, 10-144 C.M.R. Ch. 263 (amended March 15, 2023). Laboratory facilities that analyze compliance samples in-house are subject to the provisions and restrictions of 10 – 144 C.M.R. Ch. 263. If HWC monitors any pollutant more frequently than required by the permit using test procedures approved under 40 C.F.R. Part 136 or as specified in this permit, the results of this monitoring must be included in the calculation and reporting of the data submitted in the discharge monitoring report (DMR).

In accordance with 40 C.F.R. § 122.44(i)(1)(iv), the permittee must monitor according to sufficiently sensitive test procedures (i.e., methods) approved under 40 C.F.R. Part 136 or required under 40 C.F.R. chapter I, subchapter N or O, for the analysis of pollutants or pollutant parameters (except WET). A method is "sufficiently sensitive" when: 1) The method minimum level (ML) is at or below the level of the effluent limitation established in the permit for the measured pollutant or pollutant parameter; or 2) The method has the lowest ML of the analytical methods approved under 40 C.F.R. Part 136 or required under 40 C.F.R. chapter I, subchapter N or O for the measured pollutant or pollutant parameter. The term "minimum level" refers either to the sample concentration equivalent to the lowest calibration point in a method or a multiple of the method detection limit (MDL), whichever is higher. Minimum levels may be obtained in the following ways: they may be published in a method; they may be based on the lowest acceptable calibration point used by a laboratory; or they may be calculated by multiplying the MDL in a method, or the MDL determined by a laboratory, by a factor.

Sampling Locations

Effluent sampling for all parameters shall be sampled for after the last treatment component of the process.

Ambient sampling for phosphorous shall be sampled upstream of the location of discharge.

2. **Composite Samples** – Samples must consist of 24-hour composites collected with an automatic composite sampler. Alternatively, when weather conditions and/or equipment prevents automatic compositing and upon Department notification, the permittee may manually composite a minimum of eight grab samples collected at one-hour intervals during the working day at the facility. The permittee must indicate the type of sample collected on the DMR.

SPECIAL CONDITIONS

B. EFFLUENT LIMITATIONS AND MONITORING REQUIREMENTS (cont'd)

3. **BOD₅ and TSS Percent Removal** – The treatment facility must maintain a minimum of 85 percent removal of BOD₅ and a minimum of 85 percent removal for TSS.
4. ***E. coli* Bacteria Monitoring Period** – From the time of permit issuance until three years after permit issuance, the permittee is authorized to continue the previous monitoring period of May 15 through September 30 in accordance with Special Condition K, *Schedule of Compliance – Escherichia Coli Bacteria Limitations and Monitoring Requirements*. On three years and one day after permit issuance, the permittee must begin monitoring for *E. coli* bacteria between April 15 and September 30 of each year. In accordance with 38 M.R.S. § 414-A, the Department may, at any time and with notice to the permittee, modify this permit to establish bacteria limitations on a year-round basis to protect the health, safety, and welfare of the public.
5. ***E. coli* Bacteria Monthly Average** – The monthly average *E. coli* bacteria limitation is a geometric mean limitation and sample results must be reported as such. Results must be expressed in MPN/100mL or CFU/100mL.
6. ***E. coli* Bacteria Daily Maximum** – From the time of permit issuance until three years after permit issuance, the permittee is authorized to continue the previous daily maximum limitation of 427 colonies/100 mL in accordance with Special Condition K, *Schedule of Compliance – Escherichia Coli Bacteria Limitations and Monitoring Requirements*. On three years and one day after permit issuance, the permittee must meet the daily maximum limitation of 236 colonies/100 mL.
7. **Total Residual Chlorine (TRC) Limitations and Monitoring Requirements** – Limitations and monitoring requirements are in effect any time elemental chlorine or chlorine-based compounds are utilized to disinfect the discharge(s). The permittee must utilize a USEPA-approved test method capable of bracketing the TRC limitations specified in this permitting action. For instances when a facility has not disinfected with chlorine-based compounds for an entire reporting period, the facility must report “N9” for this parameter on the monthly DMR.

From the time of permit issuance until three years after permit issuance, the permittee is authorized to continue the previously established monthly average and daily maximum limitations of 0.1 mg/L and 0.12 mg/L, respectively, in accordance with Special Condition L, *Schedule of Compliance – Total Residual Chlorine Limitations*. On three years and one day after permit issuance, the permittee must meet the monthly average and daily maximum limitations of 0.05 mg/L and 0.08 mg/L, respectively.

8. **Mercury** – The permittee must conduct all mercury monitoring required by this permit to determine compliance with interim limitations established pursuant to 06-096 C.M.R. Ch. 519 in accordance with the U.S. Environmental Protection Agency’s (USEPA) “clean sampling techniques” found in USEPA Method 1669, *Sampling Ambient Water For Trace Metals At EPA Water Quality Criteria Levels*. All mercury analysis must be conducted in accordance with USEPA Method 1631E, *Determination of Mercury in Water by Oxidation, Purge and Trap, and Cold Vapor Atomic Fluorescence Spectrometry*. Mercury results must be

SPECIAL CONDITIONS

B. EFFLUENT LIMITATIONS AND MONITORING REQUIREMENTS (cont'd)

reported using the [Effluent Mercury Test Report](#) form Compliance with the monthly average limitation established in Special Condition A of this permit will be based on the cumulative arithmetic mean of all mercury tests results that were conducted utilizing sampling Methods 1669 and analysis Method 1631E on file with the Department for this facility.

9. **Total Phosphorus** – Total phosphorus monitoring must be performed in accordance with **Attachment A** of the permit entitled, *Protocol For Total P Sample Collection and Analysis for Waste Water – May, 2014*, unless otherwise specified by the Department. Monitoring requirements are seasonal and are only in effect from June 1 through September 15 of each year.
10. **Twice per Month Monitoring** – Monitoring required at a minimum frequency of 2/month must be collected no less than 14 days between sampling events, unless specifically authorized by the Department's compliance inspector.
11. **Seasonal Average Phosphorus Limitation** – This limitation is a seasonal average mass limitation applicable during the period of July 1 through September 15, inclusive, of each year. The permittee must calculate the average daily mass discharged during the season by multiplying the total gallons discharged for the season by the arithmetic mean of the 1/Week test results for total phosphorus, multiplied by 8.34 lbs/gal and then divided by the number of days in the season.
12. **Whole effluent toxicity (WET) testing** – Definitive WET testing is a multi-concentration testing event (a minimum of five dilutions bracketing the critical acute and chronic water quality thresholds of 25.1% and 22.2%, respectively), which provides a point estimate of toxicity in terms of No Observed Effect Level or Concentration, commonly referred to as NOEL or NOEC. A-NOEL is defined as the acute no observed effect level with survival as the end point. C-NOEL is defined as the chronic no observed effect level with survival, reproduction or growth as the end points. The critical acute and chronic thresholds were derived as the mathematical inverse of the applicable acute and chronic dilution factors of 3.97:1 and 4.50:1, respectively.
 - a. **Surveillance level testing.** Beginning upon permit issuance and lasting until Screening Level Testing commences, and commencing again upon the completion of Screening Level testing, the permittee must initiate surveillance level acute and chronic WET testing at a minimum frequency of once per year for both the water flea (*Ceriodaphnia dubia*) and the brook trout (*Salvelinus fontinalis*). Testing must be conducted in a different calendar quarter each sampling event.
 - b. **Screening level testing.** Beginning in the calendar year 2030 and every five years thereafter if a timely request for renewal has been made and the permit continues in force, or is replaced by a permit renewal containing this requirement, the permittee must conduct screening level WET testing at a minimum frequency of once per calendar quarter for both species. Acute and chronic tests must be conducted on both the water flea (*Ceriodaphnia dubia*) and the brook trout (*Salvelinus fontinalis*).

SPECIAL CONDITIONS

B. EFFLUENT LIMITATIONS AND MONITORING REQUIREMENTS (cont'd)

WET test results must be submitted to the Department not later than the next Discharge Monitoring Report (DMR) required by the permit, provided, however, that the permittee may review the toxicity reports for up to 10 business days of their availability before submitting them. The permittee must evaluate test results being submitted and identify to the Department possible exceedances of the critical acute and chronic water quality thresholds of 25.1% and 22.2%, respectively.

Toxicity tests must be conducted by an experienced laboratory approved by the Department. The laboratory must follow procedures as described in the following:

U.S. Environmental Protection Agency. 2002. *Methods for Measuring the Acute Toxicity of Effluents and Receiving Waters to Freshwater and Marine Organisms*, 5th ed. USEPA 821-R-02-012. U.S. Environmental Protection Agency, Office of Water, Washington, D.C., October 2002 (the acute method manual).

U.S. Environmental Protection Agency. 2002. *Short-term Methods for Estimating the Chronic Toxicity of Effluents and Receiving Waters to Freshwater Organisms*, 4th ed. USEPA 821-R-02-013. U.S. Environmental Protection Agency, Office of Water, Washington, D.C., October 2002 (the freshwater chronic method manual).

Each time a WET test is performed, results must be reported on the "WET Fresh" sheet on the Excel document *Whole Effluent Toxicity, Chemistry and Mercury Reporting Forms*, which can be found on the [Waste Discharge Program website](#). The permittee must also analyze the effluent for the analytical chemistry and priority pollutant parameters specified on the "Toxsheet" form each time a WET test is performed, which can be found on the same Excel file above.

13. **Analytical chemistry** – Refers to those pollutants listed in their respective categories on the "Toxsheet" sheet found in the Excel file labelled *Whole Effluent Toxicity, Chemistry and Mercury Reporting Forms* found on the [Waste Discharge Program website](#).
 - a. **Surveillance level testing** – Beginning upon permit issuance and lasting until Screening Level Testing commences, and commencing again upon the completion of Screening Level testing, the permittee must conduct analytical chemistry testing at a minimum frequency of once per year. Testing must be conducted in a different calendar quarter of each year.
 - b. **Screening level testing** – Beginning in the calendar year 2030 and every five years thereafter if a timely request for renewal has been made and the permit continues in force, or is replaced by a permit renewal containing this requirement, the permittee must conduct screening level analytical chemistry testing at a minimum frequency of four times per year (4/Year) in successive calendar quarters.
14. **Analytical chemistry and priority pollutant tests** – Testing must be conducted on samples collected at the same time as those collected for whole effluent toxicity tests, when applicable, and must be conducted using methods that permit

SPECIAL CONDITIONS

B. EFFLUENT LIMITATIONS AND MONITORING REQUIREMENTS (cont'd)

detection of a pollutant at existing levels in the effluent or that achieve the most current minimum reporting levels of detection as specified by the Department.

Analytical chemistry and priority pollutant test results must be submitted to the Department not later than the next DMR required by the permit, provided, however, that the permittee may review the laboratory reports for up to 10 business days of their availability before submitting them. The permittee must evaluate test results being submitted and identify to the Department, possible exceedances of the acute, chronic or human health ambient water quality criteria (AWQC) as established in *Surface Water Quality Criteria for Toxic Pollutants*, 06-096 C.M.R. Ch. 584 (last amended February 16, 2020). For the purposes of DMR reporting, enter a "1" for yes, testing done this monitoring period or "N-9" monitoring not required this period.

15. **Priority pollutant testing.** Refers to those pollutants listed in their respective categories on the "Toxsheet" form found in the Excel file labelled *Whole Effluent Toxicity, Chemistry and Mercury Reporting Forms* found on the [Waste Discharge Program website](#).

a. **Surveillance level testing** is not required pursuant to 06-096 C.M.R. Ch. 530.

b. **Screening level testing** – Beginning in the calendar year 2030 and every five years thereafter if a timely request for renewal has been made and the permit continues in force, or is replaced by a permit renewal containing this requirement, the permittee must conduct screening level priority pollutant testing at a minimum frequency of once per year (1/Year) in any calendar quarter provided the sample is representative of the discharge and any seasonal or other variations in effluent quality.

C. NARRATIVE EFFLUENT LIMITATIONS

1. The permittee must not discharge effluent that contains a visible oil sheen, foam or floating solids at any time which would impair the usages designated for the classification of the receiving waters.
2. The permittee must not discharge effluent that contains materials in concentrations or combinations which are hazardous or toxic to aquatic life, or which would impair the usages designated for the classification of the receiving waters.
3. The permittee must not discharge effluent that imparts color, taste, turbidity, toxicity, radioactivity or other properties which cause those waters to be unsuitable for the designated uses and characteristics ascribed to their classification.
4. The permittee must not discharge effluent that lowers the quality of any classified body of water below such classification, or lowers the existing quality of any body of water if the existing quality is higher than the classification.

SPECIAL CONDITIONS

D. TREATMENT PLANT OPERATOR

The person who has the management responsibility over the treatment facility must hold a **Maine Grade III (or higher)** Biological Treatment certificate or must be a Maine Registered Professional Engineer pursuant to *Wastewater Treatment Plant Operators*, 32 M.R.S. § 4171-4182 and *Wastewater Treatment Plant Operator Certification*, 06-096 C.M.R. Ch. 531 (effective July 24, 2023). All proposed contracts for facility operation by any person must be approved by the Department before the licensee may engage the services of the contract operator.

E. LIMITATIONS FOR INDUSTRIAL USERS

Pollutants introduced into the wastewater collection and treatment system by a non-domestic source (user) must not pass through or interfere with the operation of the treatment system. **The permittee must conduct an Industrial Waste Survey (IWS) any time a new industrial user proposes to discharge within its jurisdiction; an existing user proposes to make a significant change in its discharge; or at an alternative minimum, once every permit cycle, and submit the results to the Department.** The IWS must identify, in terms of character and volume of pollutants, any Significant Industrial Users discharging into the POTW subject to Pretreatment Standards under section 307(b) of the federal Clean Water Act, 40 C.F.R. Part 403 (general pretreatment regulations) or *Pretreatment Program*, 06-096 C.M.R. Ch. 528 (last amended March 17, 2008).

F. NOTIFICATION REQUIREMENTS

In accordance with Standard Condition D, the permittee must notify the Department of the following:

1. Any introduction of pollutants into the wastewater collection and treatment system from an indirect discharger in a primary industrial category discharging process wastewater; and
2. Any substantial change in the volume or character of pollutants being introduced into the wastewater collection and treatment system by a source introducing pollutants to the system at the time of permit issuance.
3. For the purposes of this section, adequate notice must include information on:
 - a. The quality and quantity of wastewater introduced to the wastewater collection and treatment system; and
 - b. Any anticipated impact of the change in the quantity or quality of the wastewater to be discharged from the treatment system.

G. OPERATIONS AND MAINTENANCE (O&M) PLAN

The permittee must have a current written comprehensive Operation & Maintenance (O&M) Plan. The plan must provide a systematic approach by which the permittee must at all times properly operate and maintain all facilities and systems of treatment and control (and related appurtenances) which are installed or used by the permittee to achieve compliance with the conditions of this permit.

By December 31 of each year, or within 90 days of any process changes or minor equipment upgrades, the permittee must evaluate and modify the O&M Plan

SPECIAL CONDITIONS

G. OPERATIONS AND MAINTENANCE (O&M) PLAN (cont'd)

including site plan(s) and schematic(s) for the wastewater treatment facility to ensure that it is up-to-date. The O&M Plan must be kept on-site at all times and made available to Department and USEPA personnel upon request.

Within 90 days of completion of new and or substantial upgrades of the wastewater treatment facility, the permittee must submit the updated O&M Plan to their Department inspector for review and comment.

H. WET WEATHER FLOW MANAGEMENT PLAN

The treatment facility staff must have a current written Wet Weather Flow Management Plan to direct the staff on how to operate the facility effectively during periods of high flow. The Department acknowledges that the existing collection system may deliver flows in excess of the monthly average design capacity of the treatment plant during periods of high infiltration and rainfall. A specific objective of the Wet Weather Management Plan must be to maximize the volume of wastewater receiving secondary treatment under all operating conditions. The plan must conform to Department guidelines for such plans and must include operating procedures for a range of intensities, address solids handling procedures (including septic waste and other high strength wastes if applicable) and provide written operating and maintenance procedures during the events.

The permittee must review the Wet Weather Management Plan annually and record any necessary changes to keep the plan up-to-date. The Department may require review and update of the plan as it is determined to be necessary.

I. MONITORING AND REPORTING

Electronic Reporting: *NPDES Electronic Reporting*, 40 C.F.R. Part 127, requires MEPDES permit holders to submit monitoring results obtained during the previous month on an electronic discharge monitoring report to the regulatory agency utilizing the USEPA electronic system.

Electronic DMRs submitted using the USEPA NetDMR system, must be:

1. Submitted by a facility authorized signatory; and
2. Submitted no later than **midnight on the 15th day of the month** following the completed reporting period.

Toxics reporting must be done using the Department toxsheet reporting form. An electronic copy of the Toxsheet reporting document must be submitted to your Department compliance inspector as an attachment to an email. Documentation submitted electronically to the Department in support of the electronic DMR may be attached to the electronic DMR and must be submitted no later than midnight on the 15th day of the month following the completed reporting period.

SPECIAL CONDITIONS

J. STATEMENT FOR REDUCED/WAIVED TOXICS TESTING

In accordance with 06-096 C.M.R. Ch. 530(2)(D)(4), and by **December 31 of each calendar year**, the permittee must provide the Department with a certification describing any of the following that have occurred since the effective date of this permit [**ICIS Code 75305**]. See **Attachment B** of this permit for an acceptable certification form to satisfy this Special Condition.

1. Changes in the number or types of non-domestic wastes contributed directly or indirectly to the wastewater treatment works that may increase the toxicity of the discharge;
2. Changes in the operation of the treatment works that may increase the toxicity of the discharge;
3. Changes in industrial manufacturing processes contributing wastewater to the treatment works that may increase the toxicity of the discharge;
4. In the comments section of the certification form, the permittee must provide the Department with statements describing:
 - a. Changes in storm water collection or inflow/infiltration affecting the facility that may increase the toxicity of the discharge; and
 - b. Increases in the type or volume of transported (hailed) wastes accepted by the facility.

The Department may require routine surveillance level testing of priority pollutants be re-instituted if it determines that there have been changes in the character of the discharge or if annual certifications described above are not submitted.

K. SCHEDULE OF COMPLIANCE – *ESCHERICHIA COLI* BACTERIA & TOTAL RESIDUAL CHLORINE LIMITATIONS AND MONITORING REQUIREMENTS

In accordance with 06-096 C.M.R. Ch. 523 § 7, schedules of compliance are authorized when they will lead to compliance with current regulations. Compliance with current *E. coli* bacteria limitations and monitoring requirements in accordance with Maine law, 38 M.R.S. § 465-B(3), and TRC limitations established in this permitting action to protect water quality, must be achieved as soon as possible. This compliance schedule contains interim dates, which shall not exceed one year, and the permittee must comply with the *E. coli* bacteria and TRC effluent limitations and monitoring requirements in accordance with the schedule below.

***E. coli* bacteria monitoring period:** The permittee is authorized to seasonally monitor and limit *E. coli* bacteria May 15 through September 30 of each year until three years after permit issuance. Three years and one day after permit issuance, the permittee must begin monitoring and limiting *E. coli* bacteria between April 15 through October 31 of each year.

***E. coli* bacteria daily maximum limitation:** The permittee is authorized to achieve the *E. coli* bacteria daily maximum limitation contained in the previous permit, 427 colonies/100 mL, until three years after permit issuance. Three years and one day after permit issuance, the permittee must achieve the *E. coli* bacteria daily maximum limitation of 236 colonies/100 mL.

SPECIAL CONDITIONS

K. SCHEDULE OF COMPLIANCE – *ESCHERICHIA COLI* & TOTAL RESIDUAL CHLORINE BACTERIA LIMITATIONS AND MONITORING REQUIREMENTS (cont'd)

TRC monthly average limitation: The permittee is authorized to achieve the monthly average TRC limitation contained in the previous permit, 0.1 mg/L, until three years after permit issuance. Three years and one day after permit issuance, the permittee must achieve the new monthly average limitation of 0.05 mg/L.

TRC daily maximum limitation: The permittee is authorized to achieve the daily maximum TRC limitation contained in the previous permit, 0.12 mg/L, until three years after permit issuance. Three years and one day after permit issuance, the permittee must achieve the new daily maximum limitation of 0.08 mg/L.

The interim dates for compliance with this requirement are below:

1. By December 31, 2026, the permittee must submit a plan and schedule for achieving compliance with a scope of work to the Department.
2. By December 31, 2027, the permittee must submit a report on progress towards meeting the current *E. coli* bacteria monitoring period (April 15 – October 31), daily maximum (236 colonies/100mL) *E. coli* bacteria requirements, and monthly average and daily maximum TRC limitations of 0.05 mg/L and 0.08 mg/L, respectively.
3. By December 31, 2028, the permittee must submit a report on progress towards meeting the current *E. coli* bacteria monitoring period (April 15 – October 31), daily maximum *E. coli* bacteria requirements (236 colonies/100mL), and monthly average and daily maximum TRC limitations of 0.05 mg/L and 0.08 mg/L, respectively.
4. By three years after permit issuance, the permittee must complete the project allowing the facility to meet the current *E. coli* bacteria monitoring period and daily maximum limitation requirements as well as the monthly average and daily maximum TRC limitations established in this permitting action. The permittee must submit a progress report containing information on the project.
5. By three years and one day after permit issuance, the permittee must begin monitoring *E. coli* bacteria between the period of April 15 through October 31, achieve the daily maximum of *E. coli* limitation of 236 colonies/100 mL, achieve the monthly average TRC limitation of 0.05 mg/L, and achieve the daily maximum TRC limitation of 0.08 mg/L.

The first progress report must provide, at minimum, a description of the process optimizations proposed to support the implementation and an implementation schedule with major milestones. In subsequent progress reports, the permittee must provide a description of work progress, schedule updates and changes (if any), pertinent project scope changes (if any), and a description of work planned for the coming year. The permittee must also notify the Department when the work is complete.

SPECIAL CONDITIONS

L. REOPENING OF PERMIT FOR MODIFICATIONS

In accordance with 38 M.R.S. § 414-A(5) and upon evaluation of the tests results in the Special Conditions of this permitting action, new site specific information, or any other pertinent test results or information obtained during the term of this permit, the Department may, at any time and with notice to the permittee, modify this permit to: (1) include effluent limitations necessary to control specific pollutants or whole effluent toxicity where there is a reasonable potential that the effluent may cause water quality criteria to be exceeded; (2) require additional monitoring if results on file are inconclusive; or (3) change monitoring requirements or limitations based on new information.

M. SEVERABILITY

In the event that any provision, or part thereof, of this permit is declared to be unlawful by a reviewing court, the remainder of the permit must remain in full force and effect, and must be construed and enforced in all aspects as if such unlawful provision, or part thereof, had been omitted, unless otherwise ordered by the court.

ATTACHMENT A

Protocol for Total Phosphorus Sample Collection and Analysis for Waste Water and Receiving Water Monitoring Required by Permits

Approved Analytical Methods: EPA 200.7 (Rev. 44), 365.1 (Rev. 2.0), (Lachat), 365.3, 365.4; SM 3120 B, 4500-P B.5, 4500-P E, 4500-P F, 4500-P G, 4500-P H; ASTM D515-88(A), D515-88(B); USGS I-4471-97, I-4600-85, I-4610-91; OMAAOAC 973.55, 973.56

Sample Collection: The Maine DEP is requesting that total phosphorus analysis be conducted on composite effluent samples, unless a facility's Permit specifically designates grab sampling for this parameter. Facilities can use individual collection bottles or a single jug made out of glass or polyethylene. Bottles and/or jugs should be cleaned prior to each use with dilute HCL. This cleaning should be followed by several rinses with distilled water. Commercially purchased, pre-cleaned sample containers are an acceptable alternative. The sampler hoses should be cleaned, as needed.

Sample Preservation: During compositing the sample must be at 0-6 degrees C (without freezing). If the sample is being sent to a commercial laboratory or analysis cannot be performed the day of collection then the sample must be preserved using H₂SO₄ to obtain a sample pH of <2 su and refrigerated at 0-6 degrees C (without freezing). The holding time for a preserved sample is 28 days.

Note: Ideally, Total P samples are preserved as described above. However, if a facility is using a commercial laboratory then that laboratory may choose to add acid to the sample once it arrives at the laboratory. The Maine DEP will accept results that use either of these preservation methods.

Laboratory QA/QC: Laboratories must follow the appropriate QA/QC procedures that are described in each of the approved methods.

Sampling QA/QC: If a composite sample is being collected using an automated sampler, then once per month run a blank on the composite sampler. Automatically, draw distilled water into the sample jug using the sample collection line. Let this water set in the jug for 24 hours and then analyze for total phosphorus. Preserve this sample as described above.

ATTACHMENT B

STATE OF MAINE
DEPARTMENT OF ENVIRONMENTAL PROTECTION

CHAPTER 530.2(D)(4) CERTIFICATION

MEPDES# _____ Facility Name _____

Since the effective date of your permit, have there been;		NO	YES Describe in comments section
1	Increases in the number, types, and flows of industrial, commercial, or domestic discharges to the facility that in the judgment of the Department may cause the receiving water to become toxic?	<input type="checkbox"/>	<input type="checkbox"/>
2	Changes in the condition or operations of the facility that may increase the toxicity of the discharge?	<input type="checkbox"/>	<input type="checkbox"/>
3	Changes in storm water collection or inflow/infiltration affecting the facility that may increase the toxicity of the discharge?	<input type="checkbox"/>	<input type="checkbox"/>
4	Increases in the type or volume of hauled wastes accepted by the facility?	<input type="checkbox"/>	<input type="checkbox"/>

COMMENTS:

Name (printed): _____

Signature: _____ Date: _____

This document must be signed by the permittee or their legal representative.

This form may be used to meet the requirements of Chapter 530.2(D)(4). This Chapter requires all dischargers having waived or reduced toxic testing to file a statement with the Department describing changes to the waste being contributed to their system as outlined above. As an alternative, the discharger may submit a signed letter containing the same information.

Scheduled Toxicity Testing for the next calendar year

Test Conducted	1 st Quarter	2 nd Quarter	3 rd Quarter	4 th Quarter
WET Testing	<input type="checkbox"/>	<input type="checkbox"/>	<input type="checkbox"/>	<input type="checkbox"/>
Priority Pollutant Testing	<input type="checkbox"/>	<input type="checkbox"/>	<input type="checkbox"/>	<input type="checkbox"/>
Analytical Chemistry	<input type="checkbox"/>	<input type="checkbox"/>	<input type="checkbox"/>	<input type="checkbox"/>
Other toxic parameters ¹	<input type="checkbox"/>	<input type="checkbox"/>	<input type="checkbox"/>	<input type="checkbox"/>

Please place an "X" in each of the boxes that apply to when you will be conducting any one of the three test types during the next calendar year.

¹ This only applies to parameters where testing is required at a rate less frequently than quarterly.

MAINE POLLUTANT DISCHARGE ELIMINATION SYSTEM PERMIT
AND
MAINE WASTE DISCHARGE LICENSE

FACT SHEET

DATE: **May 19, 2026**

MEPDES PERMIT NUMBER: **ME0101290**

WASTE DISCHARGE LICENSE NUMBER: **W002648-6D-H-R**

NAME AND ADDRESS OF APPLICANT: **HOULTON WATER COMPANY
P.O. Box 726
HOULTON, MAINE 04730**

COUNTY: **AROOSTOOK**

NAME AND ADDRESS WHERE DISCHARGE OCCURS: **135 ACCESS ROAD
HOULTON, MAINE 04730**

RECEIVING WATER/CLASSIFICATION: **MEDUXNEKEAG RIVER/CLASS B**

COGNIZANT OFFICIAL AND TELEPHONE NUMBER: **MR. GREG SHERMAN, GENERAL
MANAGER
(207) 532-2350
sherman@hwco.org**

1. APPLICATION SUMMARY

- a. Application: On June 1, 2021, the Department accepted as complete for processing an application from the Houlton Water Company (HWC) for renewal of combination Waste Discharge License (WDL) #W0002648-6D-F-R / Maine Pollutant Discharge Elimination System (MEPDES) permit #ME0101290, which was issued by the Department on August 22, 2016 for a five-year term. The August 22, 2016 permit authorized the monthly average discharge of 1.5 million gallons per day (MGD) of secondary treated wastewaters from a publicly owned treatment works (POTW) to the Meduxnekeag River, Class B, in Houlton, Maine.

The permittee has requested a compliance schedule of three years to meet current *Escherichia coli* bacteria monitoring period and daily maximum limitations and requirements as well as total residual chlorine limitations established in this permitting action.

- b. Source Description: HWC owns and operates a publicly owned treatment works (POTW) that provides a secondary level of treatment for sanitary wastewaters generated by a population of approximately 6,500 residential and commercial entities in the Town of Houlton. There are no major commercial or industrial users of the system that contribute more than 10% of the flow or pollutant loading to the wastewater treatment facility.

HWC's sewer collection system is approximately 37 miles in length, has five pump stations and is completely separated from the storm water collection system and as a result, there are no combined sewer overflow (CSO) points. See

1. APPLICATION SUMMARY (cont'd)

Attachment A for a flow schematic of the facility. The wastewater treatment facility is currently not permitted to accept transported wastes. See **Attachment B** of this Fact Sheet for a map showing the location of the treatment facility.

- c. Wastewater Treatment: HWC's wastewater treatment facility provides a secondary level of treatment via an extended air activated sludge process. The major components of the wastewater treatment process include an influent rake, grit chamber, aeration basin with diffused aeration, two secondary clarifiers, and a chlorine contact chamber. The effluent is disinfected with sodium hypochlorite and dechlorinated with sodium bisulfite prior to being discharged to the Meduxnekeag River via a perforated outfall pipe that has been placed from bank to bank in the river to enhance the mixing characteristics of the discharge with the river. The Department has made a best professional judgment determination that mixing of the effluent with the receiving water is complete and rapid. The facility is equipped with on-site generator for back-up power in the event of power outage, with a new generator installed in 2024. The generator enables the facility to provide a secondary level of treatment and disinfection under all conditions.

The HWC utilizes freeze-drying beds for sludge handling and disposal. The HWC sludge handling facilities consist of aerobic sludge holding lagoons, a one million-gallon holding lagoon and two freeze-drying beds. Dewatering by freezing is accomplished through the separation of solids and liquid fractions during crystal formation. HWC is currently authorized to seasonally spray irrigate supernatant from the sludge storage lagoon through Waste Discharge License #W008129 / #MEU508219, renewed August 11, 2023. The purpose of the spray irrigation facility is to reduce the direct discharge of phosphorous-containing wastewater to the Meduxnekeag River.

2. PERMIT SUMMARY

- a. Terms and conditions: This permitting action is carrying forward all the terms and conditions from the previous permitting action and it is:
 1. Establishing seasonal (April 15 to October 31) *Escherichia coli* (*E. coli*) bacteria limitations to protect the designated use of recreation in and on the water Pursuant to Maine law, 38 M.R.S. § 465(3)(B) in Special Condition B, *Effluent Limitations and Monitoring Requirements*, to be applied three years and one day after permit issuance in accordance with Special Condition K, *Schedule of Compliance – Escherichia coli Bacteria & Total Residual Chlorine Limitations and Monitoring Requirements*;
 2. Revising the *E. coli* bacteria daily maximum limitation from 427 colonies/100 mL to 236 colonies/100 mL in Special Condition B, *Effluent Limitations and Monitoring Requirements* based on 38 M.R.S. § 465, *Standards for classification of fresh surface waters*, to be applied three years and one day after permit issuance in accordance with Special Condition K, *Schedule of Compliance – Escherichia coli Bacteria & Total Residual Chlorine Limitations and Monitoring Requirements*;
 3. Revising total residual chlorine monthly average and daily maximum limitations in Special Condition B, *Effluent Limitations and Monitoring Requirements* based on updated dilution factors, to be applied three years

2. PERMIT SUMMARY (cont'd)

- and one day after permit issuance in accordance with Special Condition K, *Schedule of Compliance – Escherichia coli Bacteria & Total Residual Chlorine Limitations and Monitoring Requirements*;
4. Establishing seasonal (June 1 to September 15) ambient phosphorous monitoring requirements in Special Condition B, *Effluent Limitations and Monitoring Requirements* based on the need for up-to-date data in accordance with 06-096 C.M.R. Ch. 583 during the years 2029 and 2030;
 5. Revising effluent monitoring frequency for total phosphorous from once per week to two times per month in Special Condition B, *Effluent Limitations and Monitoring Requirements*;
 6. Removing the requirement to report the weekly average of phosphorous in Special Condition B, *Effluent Limitations and Monitoring Requirements*;
 7. Revising footnotes in Special Condition B, *Effluent Limitations and Monitoring Requirements* to be consistent with other MEPDES permits subsequent to HWC's August 22, 2016 permit;
 8. Revising WET modified acute and chronic thresholds in Special Condition B, *Effluent Limitations and Monitoring Requirements* based on updated dilution factors;
 9. Revising Special Condition C, *Narrative Effluent Limitations*, to be consistent with other MEPDES permits subsequent to HWC's August 22, 2016 permit;
 10. Removing the requirement in Special Condition I, Monitoring and Reporting to submit a physical copy of data submitted electronically for the Discharge Monitoring Reports (DMRs) to be consistent with other MEPDES permits subsequent to HWC's August 22, 2016 permit; and
 11. Establishing Special Condition K, *Schedule of Compliance – Escherichia coli Bacteria and Total Residual Chlorine Limitations and Monitoring Requirements* in accordance with 06-096 C.M.R. Ch. 523 § 2(l)(4), to allow the permittee time to plan and implement projects to meet *E. coli* bacteria and TRC limitations and monitoring requirements established in this permitting action.
- b. History: The most current relevant regulatory actions and significant events associated with the HWC include the following:
- September 29, 1995* – The U.S Environmental Protection Agency (USEPA) issued a renewal of National Pollutant Discharge Elimination System (NPDES) permit #ME0101290 to the HWC for a five-year term.
- May 23, 2000* – Pursuant to *Certain deposits and discharges prohibited*, 38 M.R.S. § 420 and *Waste discharge licenses*, 38 M.R.S. § 413 and *Interim Effluent Limitations and Controls for the Discharge of Mercury*, 06-096 C.M.R. Ch. 519 (last amended October 6, 2001), the Department issued a Notice of Interim Limits for the Discharge of Mercury to the permittee thereby administratively modifying WDL #W002648-5L-B-R by establishing interim monthly average and daily maximum effluent concentration limits of 7.4 parts per trillion (ppt) and 5.0 ppt, respectively.

2. PERMIT SUMMARY (cont'd)

January 12, 2001 – The Department received authorization from the USEPA to administer the NPDES permit program in Maine, excluding areas of special interest to Maine Indian Tribes. From this point forward, the program has been referred to as the Maine Pollutant Discharge Elimination System (MEPDES) program, and MEPDES permit #ME0101290 has been utilized for HWC's facility.

March 8, 2001 – The USEPA approved the Department's total maximum daily load (TMDL) for the Meduxnekeag River.

January 22, 2003 – The Department established site specific hardness values of 74 mg/L (acute) and 87 mg/L (chronic) and recalculated the 7Q10 (6.9 cfs) and 1Q10 (5.9 cfs) based on the information the HWC presented in their report entitled *Houlton Water Company, Houlton, Maine, Application to Maine Environmental Protection For Site Specific Limits Hardness Dependent Metals*,

April 2002, which was submitted to the Department for consideration on April 24, 2002.

February 16, 2005 – The Department issued combination WDL #W002648-6D-D-R / MEPDES permit #ME0101290 to the HWC for a five-year term.

April 4, 2011 – The Department issued WDL #W002648-6D-D-R to the HWC for a five-year term.

February 6, 2012 – The Department established interim average and maximum concentration limitations for the discharge of mercury.

August 22, 2016 – The Department issued combination WDL #W002648-6D-F-R / MEPDES permit #ME0101290 to the HWC for a five-year term. The renewal MEPDES permit superseded the WDLs issued on April 4, 2011.

May 14, 2021 – The HWC submitted a timely and complete General Application to the Department for renewal of the August 22, 2016 permit. The application was accepted for processing on June 1, 2021 and was assigned WDL #W002648-6D-H-R.

3. CONDITIONS OF PERMITS

Conditions of licenses, 38 M.R.S. § 414-A, requires that the effluent limitations prescribed for discharges, including, but not limited to, effluent toxicity, require application of best practicable treatment (BPT), be consistent with the U.S. Clean Water Act, and ensure that the receiving waters attain the State water quality standards as described in Maine's Surface Water Classification System. In addition, *Certain deposits and discharges prohibited*, 38 M.R.S. § 420 and Department rule *Surface Water Toxics Control Program*, 06-096 C.M.R. Ch. 530, require the regulation of toxic substances not to exceed levels set forth in *Surface Water Quality Criteria for Toxic Pollutants*, 06-096 C.M.R. Ch. 584 (last amended February 16, 2020), and that ensure safe levels for the discharge of toxic pollutants such that existing and designated uses of surface waters are maintained and protected.

4. RECEIVING WATER QUALITY STANDARDS

Classification of major river basins, 38 M.R.S. § 467(15)(E)(I)(a) classifies the Meduxnekeag River from the outlet of Meduxnekeag Lake to the international border, including the point of discharge as a Class B waterway that is subject to Sustenance Fishing Designated Use pursuant to 38 M.R.S. § 466-A. *Standards for classification of fresh surface waters*, 38 M.R.S. § 465(3) describes standards for classification of Class B waters as follows:

Class B shall be the 3rd highest classification.

A. *Class B waters must be of such quality that they are suitable for the designated uses of drinking water supply after treatment; fishing; agriculture; recreation in and on the water; industrial process and cooling water supply; hydroelectric power generation, except as prohibited under Title 12, section 403; navigation; and as habitat for fish and other aquatic life. The habitat must be characterized as unimpaired.*

B. *Class B waters must be of sufficient quality to support all aquatic species indigenous to those waters without detrimental changes in the resident biological community. The dissolved oxygen content of Class B waters may not be less than 7 parts per million or 75% of saturation, whichever is higher, except that for the period from October 1st to May 14th, in order to ensure spawning and egg incubation of indigenous fish species, the 7-day mean dissolved oxygen concentration may not be less than 9.5 parts per million and the one-day minimum dissolved oxygen concentration may not be less than 8.0 parts per million in identified fish spawning areas. Between April 15th and October 31st, the number of Escherichia coli bacteria in these waters may not exceed a geometric mean of 64 CFU or MPN per 100 milliliters over a 90-day interval or 236 CFU or MPN per 100 milliliters in more than 10% of the samples in any 90-day interval.*

C. *Discharges to Class B waters may not cause adverse impact to aquatic life in that the receiving waters must be of sufficient quality to support all aquatic species indigenous to the receiving water without detrimental changes in the resident biological community.*

(1-A) *For the purpose of allowing the discharge of aquatic pesticides or chemicals approved by the department and conducted by the department, the Department of Inland Fisheries and Wildlife or an agent of either agency to restore resident biological communities affected by an invasive species, the department may find that the discharged effluent will not cause adverse impact to aquatic life as long as the materials and methods used do not cause a significant loss of any nontarget species and allow restoration of nontarget species. The department may find that an unavoidable, temporary loss of nontarget species does not constitute a significant loss of nontarget species.*

(2) *For the purpose of allowing the discharge of aquatic pesticides approved by the department for the control of mosquito-borne diseases in the interest of public health and safety, the department may find that the discharged effluent will not cause adverse impact to aquatic life as long as the materials and methods used provide protection for nontarget species. When the department issues a license for the discharge of*

4. RECEIVING WATER QUALITY STANDARDS (cont'd)

aquatic pesticides authorized under this subparagraph, the department shall notify the municipality in which the application is licensed to occur and post the notice on the department's publicly accessible website.

5. REASONABLE POTENTIAL

Pursuant to 33 U.S.C. § 1311(b)(1)(C) and 40 C.F.R. § 122.44(d)(1), NPDES permits must contain any requirements in addition to technology based effluent limitations (TBELs) that are necessary to achieve water quality standards established under 33 U.S.C. § 1311(b)(1)(C). In addition, limitations “must control any pollutant or pollutant parameter (conventional, non-conventional, or toxic) which the permitting authority determines are or may be discharged at a level which will cause, have the reasonable potential to cause, or contribute to an excursion above any water quality standard (WQS), including State narrative criteria for water quality,” 40 C.F.R. § 122.44(d)(1)(i). To determine if the discharge causes, or has the reasonable potential to cause, or contribute to an excursion above any WQS, EPA considers: 1) existing controls on point and non-point sources of pollution; 2) the variability of the pollutant or pollutant parameter in the effluent; 3) the sensitivity of the species to toxicity testing (when evaluating whole effluent toxicity); and 4) where appropriate, the dilution of the effluent by the receiving water. See 40 C.F.R. § 122.44(d)(1)(ii).

If the permitting authority determines that the discharge of a pollutant will cause, has the reasonable potential to cause, or contribute to an excursion above WQSs, the permit must contain water quality-based effluent limitations (WQBELs) for that pollutant. See 40 C.F.R. § 122.44(d)(1)(i).

6. RECEIVING WATER QUALITY CONDITIONS

The *State of Maine Department of Environmental Protection 2018/2020/2022 Integrated Water Quality Monitoring and Assessment Report* (Report), prepared by the Department pursuant to Sections 303(d) and 305(b) of the Federal Water Pollution Control Act lists the main stem of the Meduxnekeag River from the confluence with the South Branch to biomonitoring station S-364 (Assessment Unit ID: ME0101000504_152R01_01), which includes the receiving water at the point of discharge, as *Category 4-A: Rivers and Streams with Impaired Use Other than Mercury – TMDL Completed* due to a total phosphorous impairment. This segment is also listed under *Category 5-D: Rivers and Streams Impaired by Legacy Pollutants*. Impairment in this context refers to legacy DDT contamination. The report indicates this legacy pollutant cannot be addressed with a TMDL or permit and that DDT pollutant effects will diminish naturally over time.

The 2012 Report specifies that 2009 and 2010 data indicate little change in dissolved oxygen and total phosphorus values. The Report further states that 2007 and 2008 data submitted by the Houlton Band of Maliseet Indians documents environmental indicators of nutrient problems including diurnal dissolved oxygen swings, increased algal coverage and dissolved oxygen.

On March 8, 2001, the USEPA approved a total maximum daily load (TMDL) for the Meduxnekeag River. The TMDL classifies a 6-mile stretch of river below Houlton as not attaining Class B standards for dissolved oxygen. The TMDL states, “The survey data as well as model runs indicate that the Meduxnekeag River is not attaining

6. RECEIVING WATER QUALITY CONDITIONS (cont'd)

standards for dissolved oxygen (DO) concentration below the Houlton outfall. Occasional, marginal non-attainment of DO standards was also measured above the Houlton outfall. The major factor in this non-attainment is the diurnal DO effect from the respiration of attached plant growth as a result of phosphorous enrichment." The 2012 Report specifies that the segment length was corrected to 9.5 miles on June 21, 2012, as a result of improved mapping.

In 2005, the Department established effluent phosphorous limitations for HWC as well as ambient monitoring requirements in conjunction with the Department and third-party monitoring efforts. HWC committed to undertake an intensive inflow/infiltration program to eliminate unwanted waters in the sanitary sewer collection system thereby resulting in more effective phosphorus treatment.

In 2024, the Department conducted Viewing Bucket surveys of the algae communities above and below the discharge to determine the percent nuisance algal cover. The percent nuisance algae was 69.5 % at S-964 (the upstream site), and 24 % at S-364 (the downstream site). The limit set for Class B waters in the State of Maine's *Nutrient Criteria for Class AA, A, B, and C Fresh Surface Waters* (06-096 C.M.R. Ch. 583) is $\leq 24.0\%$. Based on the decision framework set forth in the Chapter 583, Nutrient criteria are met for the Meduxnekeag River below HWC's outfall.

Biomonitoring also collected water grab samples at each site in July 2024. The Total Phosphorus at S-964 (the upstream site) was 0.011 mg/L and at S-364 (the downstream site) was 0.013 mg/L. Both sites were below the in-stream TP limit of 0.030 mg/L set for Class B waters in the State of Maine's *Nutrient Criteria for Class AA, A, B, and C Fresh Surface Waters* (06-096 C.M.R. Ch. 583).

The Report also lists all of Maine's fresh waters as *Category 4-A: Rivers and Streams Impaired by Atmospheric Deposition of Mercury*. Impairment in this context refers to a statewide fish consumption advisory due to elevated levels of mercury in some fish tissues. The Report states, "All freshwaters are listed in Category 4-A (TMDL Completed) due to USEPA approval of a Regional Mercury TMDL in December 2007. Maine has a fish consumption advisory for fish taken from all freshwaters due to mercury. Many waters, and many fish from any given water, do not exceed the action level for mercury. However, because it is impossible for someone consuming a fish to know whether the mercury level exceeds the action level, the Maine Department of Health and Human Services decided to establish a statewide advisory recommending limits on consumption for all freshwater fish. Maine has instituted statewide programs for removal and reduction of mercury sources."

Pursuant to 38 M.R.S. § 420(1-B)(B)(1), "a facility is not in violation of the ambient criteria for mercury if the facility is in compliance with an interim discharge limit established by the Department pursuant to section 413 subsection 11." The Department has established interim monthly average and daily maximum mercury concentration limits and reporting requirements for this facility pursuant to 06-096 C.M.R. Ch. 519.

7. EFFLUENT LIMITATIONS & MONITORING REQUIREMENTS

- a. Flow: The previous permitting action contained, and this permitting action is carrying forward, a monthly average discharge flow limitation of 1.5 million gallons per day (MGD), which is based on the monthly average design criterion for the facility.

The Department reviewed Discharge Monitoring Reports (DMRs) that were submitted for the period August 2020 through July 2025. A review of data indicates the following:

Flow (N = 54)

Value	Limit (MGD)	Range (MGD)	Mean (MGD)
Monthly Average	1.5	0.4 – 3.1	1.3
Daily Maximum	Report	0.7 – 5.9	2.6

Sixteen excursions occurred during the stated time period in December 2020; March, April, and September 2021; March, April, November, and December of 2022; April, September, and December of 2023; March and April of 2024; and March, April, and May of 2025.

- b. Dilution Factors: The department establishes applicable dilution factors for discharges in accordance with freshwater protocols established in *Surface Water Toxics Control Program*, 06-096 C.M.R. Ch. 530. The department has determined the 1Q10, 7Q10, and harmonic mean flow at the HWC outfall using mean daily flow data from the USGS’s gauge on the Meduxnekeag River at Lowry Road in Houlton (NWIS 01018035) for the 7/1/2005-6/30/2025 record period. Using these flows and a monthly average flow limit of 1.50 MGD for the facility’s discharge, the dilution factors for the facility are calculated as follows:

Acute: 1Q10 =

$$6.89 \text{ cfs} \Rightarrow [(6.89 \text{ cfs})(0.6464) + (1.50 \text{ MGD})]/(1.50 \text{ MGD}) = 3.97:1$$

Chronic: 7Q10 =

$$8.12 \text{ cfs} \Rightarrow [(8.12 \text{ cfs})(0.6464) + (1.50 \text{ MGD})]/(1.50 \text{ MGD}) = 4.50:1$$

Human Health/Harmonic Mean: =

$$112 \text{ cfs} \Rightarrow [(112 \text{ cfs})(0.6464) + (1.50 \text{ MGD})]/(1.50 \text{ MGD}) = 49.3:1$$

06-096 C.M.R. Ch. 530(4)(B)(1) states that analyses using numeric acute criteria for aquatic life must be based on one-fourth of the 1Q10 stream design flow to prevent substantial acute toxicity within any mixing zone. The regulation goes on to say that where it can be demonstrated that a discharge achieves rapid and complete mixing with the receiving water by way of an efficient diffuser or other effective method, analyses may use a greater proportion of the stream design, up to including all of it. The Department has determined HWC’s discharge via a bank-to-bank diffuser receives rapid and complete mixing with the receiving water; therefore, the department is utilizing the full 1Q10 river flow for acute evaluations.

- c. Biochemical Oxygen Demand (BOD₅) and Total Suspended Solids (TSS): The previous permitting action contained, and this permitting action is carrying forward, monthly average and weekly average technology-based concentration limits of 30 mg/L and 45 mg/L, respectively, for BOD₅ and TSS based on the

7. EFFLUENT LIMITATIONS AND MONITORING REQUIREMENTS (cont'd)

secondary treatment requirements specified at 06-096 C.M.R. Ch. 525(3)(III) (effective January 12, 2001), and a daily maximum concentration limit of 50 mg/L, which is based on a Department best professional judgment of best practicable treatment for secondary treated municipal wastewater. The BOD₅ and TSS technology-based monthly average, weekly average and daily maximum mass limits of 375 lbs./day and 563 lbs./day, and 626 lbs./day, respectively, are based on the monthly average flow limit of 1.5 MGD and the applicable concentration limits, are also being carried forward in this permitting action.

This permitting action is also carrying forward the requirement for a minimum of 85% removal of BOD₅ & TSS pursuant to 06-096 C.M.R. Ch. 525(3)(III)(a)(3) and (b)(3).

The Department reviewed DMRs for Outfall #001A that were submitted for the period August 2020 through July 2025 for BOD₅ and TSS. A review of data follows:

BOD₅ mass (N = 54)

Value	Limit (lbs./day)	Range (lbs./day)	Mean (lbs./day)
Monthly Average	375	0 – 130	22
Weekly Average	563	0 – 252	63
Daily Maximum	626	14 – 252	71

BOD₅ concentration (N = 54)

Value	Limit (mg/L)	Range (mg/L)	Mean (mg/L)
Monthly Average	30	2 – 9	4
Weekly Average	45	2 – 22	5
Daily Maximum	50	2 – 22	5

TSS mass (N = 54)

Value	Limit (lbs./day)	Range (lbs./day)	Mean (lbs./day)
Monthly Average	375	0 – 76	17
Weekly Average	563	6 – 150	44
Daily Maximum	626	9 – 150	45

TSS concentration (N = 54)

Value	Limit (mg/L)	Range (mg/L)	Mean (mg/L)
Monthly Average	30	1 – 4	2
Weekly Average	45	1 – 11	3
Daily Maximum	50	1 – 11	3

BOD Percent Removal (N = 54)

Value	Minimum Limit (%)	Range (%)	Mean (%)
Monthly Average	85	84 – 99	96

TSS Percent Removal (N = 54)

Value	Minimum Limit (%)	Range (%)	Mean (%)
Monthly Average	85	87 – 99	97

During this time period, there was one excursion for BOD₅ percent removal that occurred in April 2025.

7. EFFLUENT LIMITATIONS AND MONITORING REQUIREMENTS (cont'd)

The minimum monitoring frequency of once per week of BOD₅ and TSS monthly average, weekly average, and daily maximum is being carried forward in this permit. The minimum reporting frequency of once per month of BOD₅ and TSS percent removal is being carried forward in this permit.

- d. **Settleable Solids:** The previous permitting action contained, and this permitting action is carrying forward, a daily maximum best practicable treatment concentration limit of 0.3 ml/L based on a Department best professional judgment of best practicable treatment. This permitting action is carrying forward the minimum monitoring frequency requirement of three times per week.

A summary of settleable solids data as reported on the monthly DMRs for the period of August 2020 through July 2025 (N = 54) indicates the daily maximum settleable solids concentration discharge has been <0.1 mL/L for each recording during the stated reporting period.

- e. ***Escherichia coli (E. coli)* bacteria:** The previous permitting action included seasonal (May 15 through September 30 of each year) geometric mean (monthly average) and instantaneous level (daily maximum) *E. coli* bacteria limits of 64 colonies/100 mL and 427 colonies/100 mL, respectively. Pursuant to Maine law, 38 M.R.S. § 465(B)(2), this permitting action is expanding the seasonal monitoring period to April 15 through October 31 of each year. During calendar year 2005, Maine’s Legislature approved a new daily maximum water quality standard of 236 colonies/100 mL for Class B and Class C waters. Therefore, the daily maximum limit in this permitting action is being reduced to 236 colonies/100 mL. This permitting action is carrying forward the monthly average limitation of 64 colonies/100 mL and the minimum monitoring frequency requirement of once per week.

In accordance with Special Condition K, *Schedule of Compliance – Escherichia coli Bacteria & Total Residual Chlorine Limitations and Monitoring Requirements*, the permittee is authorized to continue the monitoring period of May 15 through September 30 of each year until three years after permit issuance. On three years and one day after permit issuance, the permittee is required to monitor between April 15 through October 31 of each year.

In accordance with Special Condition K, *Schedule of Compliance – Escherichia coli Bacteria & Total Residual Chlorine Limitations and Monitoring Requirements*, the permittee is authorized to continue achieving the daily maximum *E. coli* limitation of 427 colonies / 100 mL contained in the previous permit until three years after permit issuance. On three years and one day after permit issuance, the permittee is required to achieve the daily maximum *E. coli* limitation of 236 colonies/100 mL.

A summary of the *E. coli* bacteria data as reported on the DMRs submitted to the Department for Outfall #001A for August 2020 through July 2025 is as follows:

***E. coli* Bacteria (N = 24)**

Value	Limit (col/100 mL)	Range (col/100 mL)	Mean (col/100 mL)
Monthly Average	64	1 – 12	4
Daily Maximum	427	1 – 88	22

7. EFFLUENT LIMITATIONS AND MONITORING REQUIREMENTS (cont'd)

- f. Total Residual Chlorine (TRC): The previous permit contained monthly average and daily maximum water quality-based TRC limits of 0.1 mg/L and 0.12 mg/L, respectively, for Outfall #001A to be in effect when elemental chlorine or chlorine-based compounds are utilized to disinfect the discharge. Limitations on TRC are specified to ensure that ambient water quality standards are maintained and that BPT technology is being applied to the discharge. The Department imposes the more stringent of the water quality or technology-based limits in permitting actions pursuant to 06-096 C.M.R. Ch. 584. End-of-pipe water quality-based concentration thresholds may be calculated as follows:

Criterion (A)	Dilution Factors (B)	Calculated Threshold (A x B)
Acute (daily maximum): 0.019 mg/L	Acute: 3.97:1	Acute (daily maximum) = 0.08 mg/L
Chronic (monthly average): 0.011 mg/L	Chronic: 4.50:1	Chronic (monthly average): 0.05 mg/L

For facilities that dechlorinate following disinfecting effluent with elemental chlorine or chlorine-based compounds, the discharge needs to meet water quality-based thresholds. The monthly average and daily maximum TRC limitations are less stringent than limitations calculated with current dilution factors. Thus, this permitting action is establishing a monthly average TRC limit of 0.05 mg/L and a daily maximum TRC limit of 0.08 mg/L to protect water quality.

In accordance with Special Condition K, *Schedule of Compliance – Escherichia coli Bacteria & Total Residual Chlorine Limitations and Monitoring Requirements*, the permittee is authorized to achieve the monthly average TRC limitation contained in the previous permit, 0.1 mg/L, until three years after permit issuance. Three years and one day after permit issuance, the permittee must achieve the new monthly average limitation of 0.05 mg/L.

In accordance with Special Condition K, *Schedule of Compliance – Escherichia coli Bacteria & Total Residual Chlorine Limitations and Monitoring Requirements*, the permittee is authorized to achieve the daily maximum TRC limitation contained in the previous permit, 0.12 mg/L, until three years after permit issuance. Three years and one day after permit issuance, the permittee must achieve the new daily maximum limitation of 0.08 mg/L.

The Department reviewed DMRs that were submitted for the period August 2020 through July 2025:

Total residual chlorine (N = 24)

Value	Limit (mg/L)	Range (mg/L)	Mean (mg/L)
Monthly Average	0.1	0.02 – 0.05	0.05
Daily Maximum	0.12	0.05 – 0.10	0.06

This permitting action is carrying forward the minimum monitoring frequency requirement of three times per week for TRC.

7. EFFLUENT LIMITATIONS AND MONITORING REQUIREMENTS (cont'd)

- g. pH: The previous permitting action contained, and this permitting action is carrying forward, a technology-based pH limit of 6.0 – 9.0 standard units, which is in accordance with 06-096 C.M.R. Ch. 525(3)(III)(c), and a minimum monitoring frequency requirement of once per day based on best professional judgment (BPJ).

The Department reviewed DMRs that were submitted for the period August 2020 through July 2025. A review of data indicates the following:

pH (N=54)

Value	Limit (S.U.)	Minimum (S.U.)	Maximum (S.U.)
Range	6.0 – 9.0	6.4	7.9

- h. Total Phosphorus: Waste Discharge License Conditions, 06-096 C.M.R. Ch. 523 specifies that water-quality-based limits are necessary when a discharge has the potential to cause or contribute to an excursion above any state water quality standard, including narrative standards. In addition, Ch. 523 specifies that water-quality-based limits may be based upon criterion derived from a proposed state criterion or from an explicit state policy or regulation interpreting a narrative water quality criterion. On June 11, 2025, U.S. EPA Region 1 approved the State of Maine’s *Nutrient Criteria for Class AA, A, B, and C Fresh Surface Waters* (06-096 C.M.R. Ch. 583). This rule includes criteria for the protection of fresh surface waters from eutrophication impacts due to the discharge of total phosphorus (TP). Under this rule, the Meduxnekeag River at Houlton, a Class B water, has an in-stream TP limit of 0.030 mg/L during August median flow conditions. The potential for the HWC’s discharge to cause or contribute a total phosphorus excursion in the Meduxnekeag River will be assessed using this limit.

The Department reviewed DMRs that were submitted for the period August 2020 through July 2025. A review of data follows:

Total Phosphorous mass

Value	N	Limit (lbs./day)	Range (lbs./day)	Mean (lbs./day)
Monthly Average	23	1.25 (July – Sept.)	0.47 – 2.07	1.04
Weekly Average	19	Report	0.72 – 4.28	1.53
Daily Maximum	19	Report	0.72 – 4.28	1.53

Total Phosphorous concentration

Value	N	Limit (µg/L)	Range (µg/L)	Mean (µg/L)
Monthly Average	19	250 (June – Sept.)	102 – 195	140
Weekly Average	19	Report	120 – 392	183
Daily Maximum	19	500 (June – Sept.)	120 – 392	182

The permittee has performed once-per-week monitoring of effluent total phosphorus in the summer (June 1st – September 15th) since the last permit renewal. The geometric mean of the monthly average TP concentrations (N = 19) of the most recent five years of data (8/2020 – 7/2025) is 0.138 mg/L. This value is being used as the seasonal effluent concentration in the reasonable potential analysis in this fact sheet.

7. EFFLUENT LIMITATIONS AND MONITORING REQUIREMENTS (cont'd)

The Houlton Water Company and Acheron Engineering collected ambient total phosphorus data upstream (station 2MDX) of HWC's discharge during the summers of 2001 through 2009. The geometric mean of the June to September data (N = 130) is 0.013 mg/L. In the absence of more recent data for a full summer season, the department is using this total phosphorus concentration of 0.013 mg/L as the river's seasonal background concentration in the reasonable potential analysis of this fact sheet.

As part of its update of the dilution factors, the department's Division of Environmental Assessment also determined the August median flow at the permittee's outfall, which is three miles upstream of the USGS's flow gauge at Lowry Road in Houlton. The river's August median flow at the outfall is estimated to be 43.1 MGD (66.6 cfs). Using this river flow, an effluent TP concentration of 0.140 mg/L, and an ambient background TP concentration of 0.013 mg/L, the reasonable potential analysis for the total phosphorus concentration in the river due to the discharge is as follows:

$$C_r = (Q_e C_e + Q_s C_s) / Q_r$$

Q _e = effluent flow	=	1.5 MGD
C _e = effluent pollutant concentration	=	0.138 mg/L
Q _s = August median flow of receiving water	=	43.1 MGD
C _s = upstream concentration	=	0.013 mg/L
Q _r = receiving water flow (1.5 MGD + 43.1 MGD)	=	44.6 MGD
C _r = receiving water concentration		

$$C_r = [(1.5 \text{ MGD} \times 0.138 \text{ mg/L}) + (43.1 \text{ MGD} \times 0.013 \text{ mg/L})] / (44.6 \text{ MGD}) = 0.017 \text{ mg/L}$$

C_r = 0.017 mg/L < 0.030 mg/L No Reasonable Potential

Although the calculation indicates HWC's discharge does not have a reasonable potential to exceed Class B water quality criterion of 0.030 mg/L for total phosphorus, the Meduxnekeag River remains listed as impaired due to nuisance algal growth and dissolved oxygen attainment. Based on the recommendations of the 2001 TMDL, the department is carrying forward the seasonal (June 1st through September 15th) monthly average and daily maximum concentration limits of 250 µg/L and 500 µg/L, respectively, and a seasonal (July 1st through September 15th) average total phosphorus mass limit of 1.25 lbs./day.

As the permittee has demonstrated consistent proficiency in keeping effluent total phosphorus below the monthly average and daily maximum concentration limits and the seasonal average mass limit, this permitting action is reducing the minimum monitoring frequency requirement for effluent total phosphorus from once per week for the summer season (June 1st – September 15th) to twice per month for the summer season (June 1st – September 15th). Also, to obtain better ambient data for future reasonable potential analyses, the permitting action is establishing an upstream ambient total phosphorus monitoring requirement of twice per month for the summer season (June 1st – September 15th) by the permittee for the third and fourth years of this five-year permit renewal. The requirement to report weekly average of phosphorous is being removed to reduce repetition.

7. EFFLUENT LIMITATIONS AND MONITORING REQUIREMENTS (cont'd)

- i. Mercury: Pursuant to Maine law, 38 M.R.S. § 420, Department Rule *Interim Effluent Limitations and Controls for the Discharge of Mercury*, 06-096 C.M.R. Ch. 519, and *Certain deposits and discharges prohibited*, 38 M.R.S. § 420 sub-§ 1-B(F), the 2016 permitting action established, and this permitting action is carrying forward, the monthly average and daily maximum effluent concentration limits of 5.0 ng/L or parts per trillion (ppt) and 7.4 ng/L (or ppt), respectively, and a minimum monitoring frequency requirement of one test per year for mercury. The Department reviewed DMRs submitted for the period August 2020 through July 2025:

Mercury (N = 3)

Value	Limit (ng/L)	Range (ng/L)	Mean (ng/L)
Monthly Average	5.0	0.7 – 1.3	0.9
Daily Maximum	7.4	0.7 – 1.3	0.9

- j. Whole Effluent Toxicity (WET) and Chemical Specific Testing: *Conditions of licenses*, 38 M.R.S. § 414-A and *Certain deposits and discharges prohibited*, 38 M.R.S. § 420, prohibit the discharge of effluents containing substances in amounts that would cause the surface waters of the State to contain toxic substances above levels set forth in Federal Water Quality Criteria as established by the USEPA. *Surface Water Toxics Control Program*, 06-096 C.M.R. Ch. 530 sets forth effluent monitoring requirements and procedures to establish safe levels for the discharge of toxic pollutants such that existing and designated uses of surface waters are maintained and protected, and narrative and numeric water quality criteria are met. *Surface Water Quality Criteria for Toxic Pollutants*, 06-096 C.M.R. Ch. 584 set forth ambient water quality criteria (AWQC) for toxic pollutants and procedures necessary to control levels of toxic pollutants in surface waters.

WET, priority pollutant and analytical chemistry testing as required by 06-096 C.M.R. Ch. 530, is included in this permit to fully characterize the effluent. This permit also provides for reconsideration of effluent limits and monitoring schedules after evaluation of toxicity testing results. The monitoring schedule includes consideration of results currently on file, the nature of the wastewater, existing treatment and receiving water characteristics.

WET monitoring is required to assess and protect against impacts upon water quality and designated uses caused by the aggregate effect of the discharge on specific aquatic organisms. Acute and chronic WET tests are performed on the water flea (*Ceriodaphnia dubia*) and brook trout (*Salvelinus fontinalis*). Priority pollutant and analytical chemistry testing is required to assess the levels of individual toxic pollutants in the discharge, comparing each pollutant to acute, chronic, and human health AWQC as established in 06-096 C.M.R. Ch. 584. Priority pollutant testing refers to the analysis for levels of priority pollutants listed under “Priority Pollutants” on the “Toxsheet” form found in the Excel file labelled *Whole Effluent Toxicity, Chemistry and Mercury Reporting Forms* found on the [Waste Discharge Program website](#). 06-096 C.M.R. Ch. 530(2)(A) specifies the dischargers subject to the rule as, “All licensed dischargers of industrial process wastewater or domestic wastes discharging to surface waters of the State.” The HWC discharges domestic (sanitary) wastewater to surface waters and is therefore subject to the testing requirements of the toxics rule.

7. EFFLUENT LIMITATIONS AND MONITORING REQUIREMENTS (cont'd)

06-096 C.M.R. Ch. 530(2)(B) categorizes discharges subject to the toxics rule into one of four levels (Level I through IV). The four categories for dischargers are as follows:

Level I – chronic dilution factor of <20:1.

Level II – chronic dilution factor of ≥20:1 but <100:1.

Level III – chronic dilution factor ≥100:1 but <500:1 or >500:1 and flow ≥1.0 MGD

Level IV – chronic dilution >500:1 and flow ≤1.0 MGD

Based on the 06-096 C.M.R. Ch. 530 criteria, the permittee’s facility falls into the Level I frequency category as the facility has a chronic dilution factor of < 20:1. 06-096 C.M.R. Ch. 530(1)(D)(1) specifies that routine screening and surveillance level testing requirements are as follows:

Level I testing

Type	WET	Priority pollutant	Analytical chemistry
Screening	4 per year*	1 per year*	4 per year*
Surveillance	2 per year*	None required*	4 per year*

A review of the data on file with the Department indicates that to date, the permittee has fulfilled the WET and chemical-specific testing requirements of the 06-096 C.M.R. Ch. 530.

06-096 C.M.R. Ch. 530(2)(D)(3)(d) states in part *“Dischargers in Level I may reduce surveillance testing to one WET or specific chemical series per year provided that testing in the preceding 60 months does not indicate any reasonable potential for exceedance as calculated pursuant to section 3(E).”*

06-096 C.M.R. Ch. 530(3) states: *“The Department shall establish appropriate discharge prohibitions, effluent limits and monitoring requirements in waste discharge licenses if a discharge contains pollutants that are or may be discharged at levels that cause, have reasonable potential to cause, or contribute to an ambient excursion in excess of a numeric or narrative water quality criteria or that may impair existing or designated uses. The licensee must also control whole effluent toxicity (WET) when discharges cause, have a reasonable potential to cause, or contribute to an ambient excursion above the narrative water quality criteria. In determining if effluent limits are required, the Department shall consider all information on file and effluent testing conducted during the preceding 60 months. However, testing done in the performance of a Toxicity Reduction Evaluation (TRE) approved by the Department may be excluded from such evaluations.”*

WET Evaluation: 06-096 C.M.R. Ch. 530(3)(E) states: *“For effluent monitoring data and the variability of the pollutant in the effluent, the Department shall apply the statistical approach in Section 3.3.2 and Table 3-2 of USEPA's "Technical Support Document for Water Quality-Based Toxics Control" (USEPA Publication 505/2-90-001, March, 1991, EPA, Office of Water, Washington, D.C.) to data to determine whether water-quality based effluent limits must be included in a waste discharge license. Where it is determined through this approach that a discharge contains pollutants or WET at levels that have a reasonable potential to cause or contribute to an exceedance of water quality criteria, appropriate water quality-based limits must be established in any licensing action.”*

7. EFFLUENT LIMITATIONS AND MONITORING REQUIREMENTS (cont'd)

On September 9, 2025, the Department conducted a statistical evaluation on the most recent 60 months of WET test results on file with the Department for the Town in accordance with the statistical approach outlined above. The 9/9/25 statistical evaluation indicates that none of the results had a reasonable potential to exceed the established acute or chronic water quality thresholds of 16.4% and 13.9%, respectively. This permitting action is establishing new acute or chronic water quality thresholds of 25.1% and 22.2% respectively, calculated as the mathematical inverse of the updated applicable dilution factors of 3.97:1 as modified acute and 4.50:1 as chronic. See **Attachment C** of this Fact Sheet for a summary of the WET test results.

Based on the results of the 9/3/25 statistical evaluation, the permittee continues to qualify for the Chapter 530(2)(D)(3)(d) testing reduction for WET test species. Therefore, this permitting action allows the continued reduction in surveillance level testing to a minimum of one WET test per year. In accordance with Chapter 530(2)(D)(4), Special Condition J, *Statement for Reduced/Waived Toxics Testing* of this permit explains the statement required by the discharger to reduce WET testing and requires the permittee to file an annual certification with the Department. It is noted that if future WET testing results indicate the discharge exceeds critical water quality thresholds, this permit will be reopened pursuant to Special Condition K, *Reopening of Permit For Modification*, to establish applicable limitations and monitoring requirements.

Analytical Chemistry & Priority Pollutant Testing Evaluation: 06-096 C.M.R. Ch. 530(3) states, "*In determining if effluent limits are required, the Department shall consider all information on file and effluent testing conducted during the preceding 60 months. However, testing done in the performance of a Toxicity Reduction Evaluation (TRE) approved by the Department may be excluded from such evaluations.*"

06-096 C.M.R. Ch. 530(4)(C), states: "*The background concentration of specific chemicals must be included in all calculations using the following procedures. The Department may publish and periodically update a list of default background concentrations for specific pollutants on a regional, watershed or statewide basis. In doing so, the Department shall use data collected from reference sites that are measured at points not significantly affected by point and non-point discharges and best calculated to accurately represent ambient water quality conditions. The Department shall use the same general methods as those in section 4(D) to determine background concentrations. For pollutants not listed by the Department, an assumed concentration of 10% of the applicable water quality criteria must be used in calculations.*"

The Department has limited information on the background levels of metals in the water column in the Meduxnekeag River in the vicinity of the permittee's outfall. Therefore, a default background concentration of 10% of the applicable water quality criteria is being used in the calculations of this permitting action.

06-096 C.M.R. Ch. 530(3)(E) states, "*Where it is determined...that a discharge contains pollutants or WET at levels that have a reasonable potential to cause or contribute to an exceedance of water quality criteria, appropriate water quality-based limits must be established in any licensing action.*"

7. EFFLUENT LIMITATIONS AND MONITORING REQUIREMENTS (cont'd)

The Department conducted a statistical evaluation on September 9, 2025, for the most current 60 months of analytical chemistry and priority pollutant test results on file. The evaluation indicates that only one pollutant, copper, had reasonable potential (RP) to exceed the chronic ambient water quality thresholds. After the high reading for copper in July of 2022, an evaluation was conducted to determine the source of copper and measures were taken to reduce future high readings by removing an aging copper pipe just upstream of the sampling site. There have been no high readings since. See **Attachment D** of this Fact Sheet for the individual test results.

The receiving water is subject to a sustenance fishing designated use pursuant to section 38 M.R.S. § 466-A, therefore reasonable potential evaluations for human health AWQC were also conducted using a fish consumption rate of 200 grams per day in accordance with 38 M.R.S. § 466-A(1) and 06-096 C.M.R. Ch. 584.

In accordance with 06-096 C.M.R. Ch. 530(2)(D)(3)(d), this permitting action is carrying forward the reduced surveillance level monitoring frequency of once per year (1/Year) for analytical chemistry.

8. SCHEDULE OF COMPLIANCE – *ESCHERICHIA COLI* BACTERIA & TOTAL RESIDUAL CHLORINE LIMITATIONS AND MONITORING REQUIREMENTS

The permittee requested a schedule of compliance of three years to allow time to implement physical changes to the facility required to achieve current *E. coli* bacteria limitations and monitoring requirements, in accordance with Maine law, 38 M.R.S. § 465-B(3), and TRC limitations that are protective of water quality.

06-096 C.M.R. Ch. 523 § 7 states,

a. General. The permit may, when appropriate, specify a schedule of compliance leading to compliance with CWA and regulations.

1. Time for compliance. Any schedules of compliance under this section shall require compliance as soon as possible, but not later than the applicable statutory deadline under the CWA.

...

3. Interim dates. Except as provided in paragraph (b)(1)(ii) of this section, if a permit establishes a schedule of compliance which exceeds 1 year from the date of permit issuance, the schedule shall set forth interim requirements and the dates for their achievement.

i. The time between interim dates shall not exceed 1 year...

ii. If the time necessary for completion of any interim requirement (such as the construction of a control facility) is more than 1 year and is not readily divisible into stages for completion, the permit shall specify interim dates for the submission of reports of progress toward completion of the interim requirements and indicate a projected completion date.

8. SCHEDULE OF COMPLIANCE – *ESCHERICHIA COLI* & TOTAL RESIDUAL CHLORINE BACTERIA LIMITATIONS AND MONITORING REQUIREMENTS (cont'd)

4. *Reporting. The permit shall be written to require that no later than 14 days following each interim date and the final date of compliance, the permittee shall notify the Department in writing of its compliance or noncompliance with the interim or final requirements, or submit progress reports if paragraph (a)(3)(ii) is applicable.*

The Department grants this request for a compliance schedule with this permit due to the scope of the physical changes to the facility that are needed to achieve compliance with the *E. coli* and TRC limitation and monitoring requirements established in this permitting action. The compliance schedule, found in this permit under Special Condition K, *Schedule of Compliance – Escherichia Coli Bacteria & Total Residual Chlorine Limitations and Monitoring Requirements*, requires the permittee to achieve the limitations and monitoring requirements established in this permit by three years and one day after permit issuance. The requirements established in this permit included in the compliance schedule are:

- a. *E. coli* bacteria monitoring period of April 15 through October 31 of each year;
- b. *E. coli* bacteria daily maximum limitation of 236 colonies/100 mL;
- c. TRC monthly average limitation of 0.05 mg/L; and
- d. TRC daily maximum limitation of 0.08 mg/L.

The permittee has not provided anticipated dates of completion; thus interim reporting dates have been chosen to gauge progress on project completion.

9. ANTI-BACKSLIDING

Federal regulation 40 C.F.R. § 122.44(l) contains the criteria for what is often referred to as the anti-backsliding provisions of the Federal Water Pollution Control Act (Clean Water Act). In general, the regulation states that except for provisions specified in the regulation, effluent limitations, standards, or conditions must be at least as stringent as the final effluent limitations, standards or conditions in the previous permit.

Applicable exceptions include: (1) material and substantial alterations or additions to the permitted facility occurred after permit issuance which justify the application of a less stringent effluent limitation and (2) information is available which was not available at the time of the permit issuance (other than revised regulations, guidance, or test methods) and which would justify the application of less stringent effluent limitations at the time of permit issuance. All limitations in this permit are equally or more stringent than those in the previous permit.

10. ANTI-DEGRADATION

As permitted, the Department has determined the existing water uses will be maintained and protected and the discharge will not cause or contribute to the failure of the waterbody to meet standards for Class B waters. In addition, the Department has made the determination that water quality standards established in State law are protective of all cold-water fish populations and that effluent monitoring of the discharge and ambient water quality monitoring of the receiving waters required by this permit serve as an interim Habitat Conservation Plan (HCP).

11. PUBLIC COMMENTS

Public notice of this application was made in the Houlton Pioneer Times newspaper on May 5, 2021. The Department receives public comments on an application until the date a final agency action is taken on the application. Those persons receiving copies of draft permits shall have at least 30 days in which to submit comments on the draft or to request a public hearing, pursuant to *Application Processing Procedures for Waste Discharge Licenses*, 06-096 C.M.R. Ch. 522 (effective January 12, 2001).

12. DEPARTMENT CONTACTS

Additional information concerning this permitting action may be obtained from, and written comments sent to:

Bekah Farmer
Division of Water Quality Management
Bureau of Water Quality
Department of Environmental Protection
17 State House Station
Augusta, Maine 04333-0017 Telephone: (207) 458-8706
e-mail: Bekah.Farmer@maine.gov

13. RESPONSE TO COMMENTS

Reserved for future comments.

ATTACHMENT A

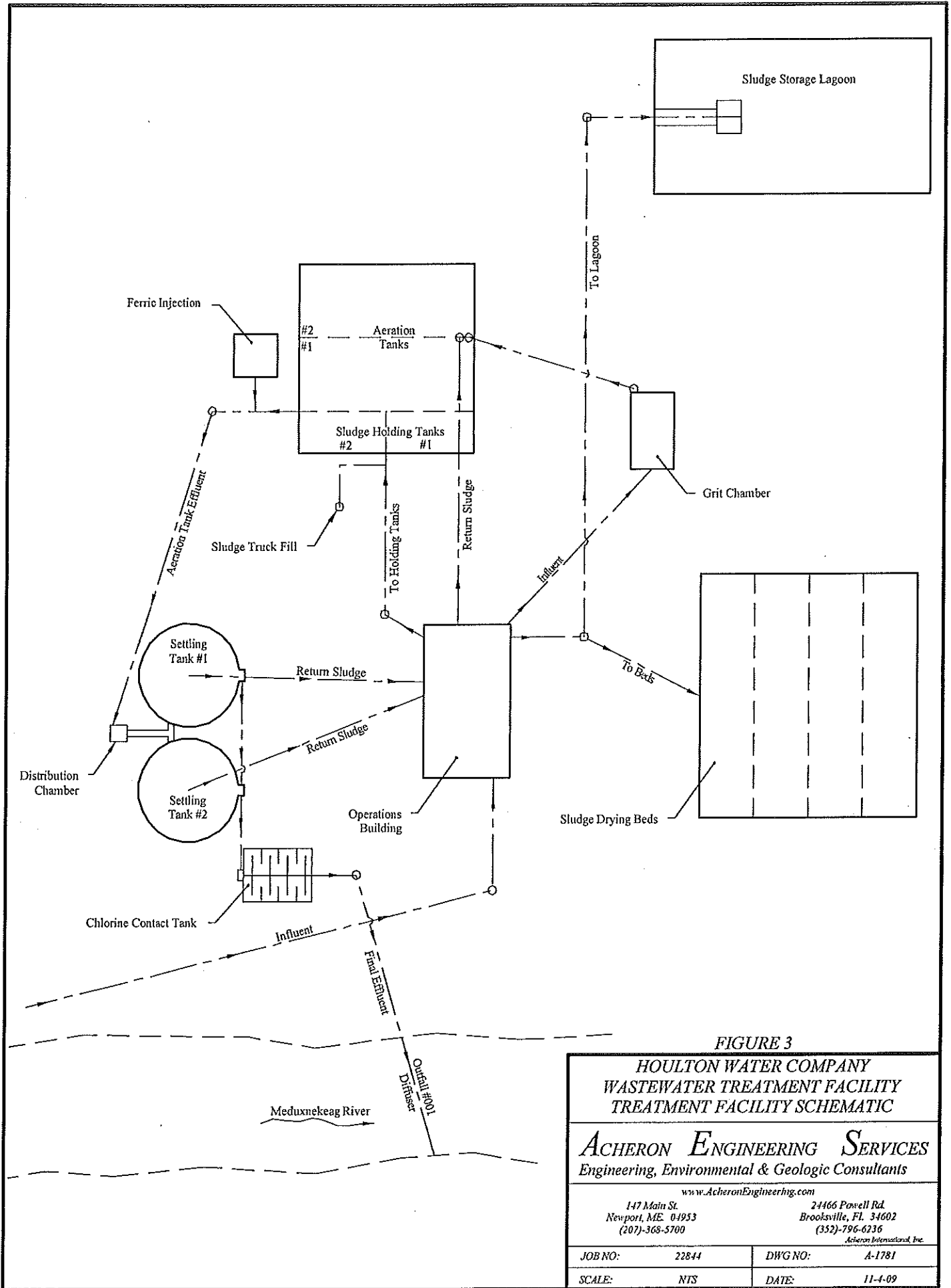


FIGURE 3

HOULTON WATER COMPANY
 WASTEWATER TREATMENT FACILITY
 TREATMENT FACILITY SCHEMATIC

ACHERON ENGINEERING SERVICES
 Engineering, Environmental & Geologic Consultants

www.AcheronEngineering.com
 147 Main St.
 Newport, ME 04953
 (207)-368-5700

24466 Powell Rd.
 Brooksville, FL 34602
 (352)-796-6236

Acheron International, Inc.

JOB NO: 22844
 SCALE: NTS

DWG NO: A-1781
 DATE: 11-4-09

ATTACHMENT B

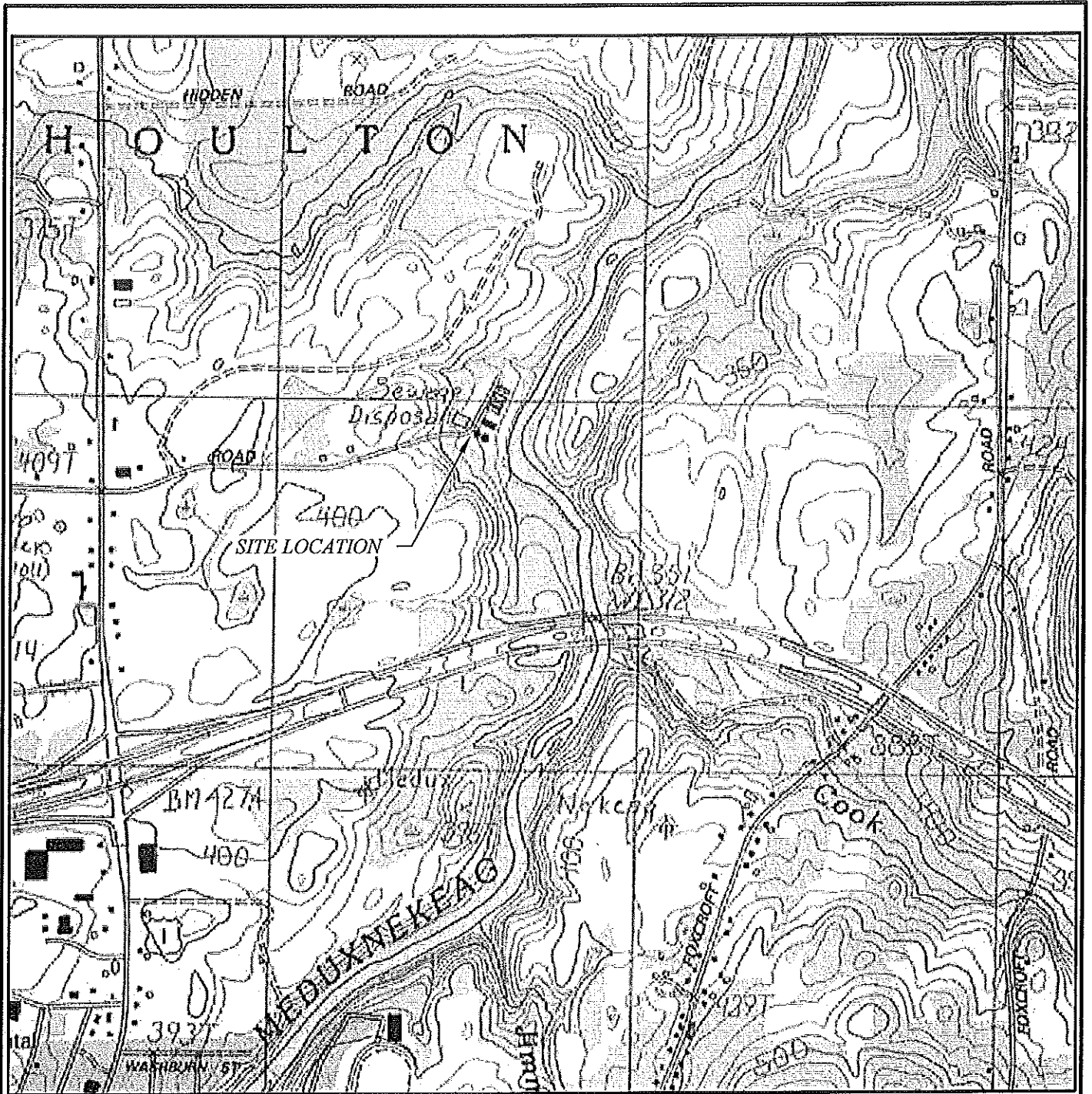


FIGURE 1

HOULTON WATER COMPANY
 WASTEWATER TREATMENT FACILITY
 SITE LOCATION MAP

ACHERON ENGINEERING SERVICES
 Engineering, Environmental & Geologic Consultants

www.AcheronEngineering.com
 147 Main St.
 Newport, ME 04953
 (207)-368-5700

24466 Powell Rd.
 Brooksville, FL 34602
 (352)-796-6236

Acheron International, Inc.

JOB NO:	22844	DWG NO:	A-1779
SCALE:	NTS	DATE:	11-4-09

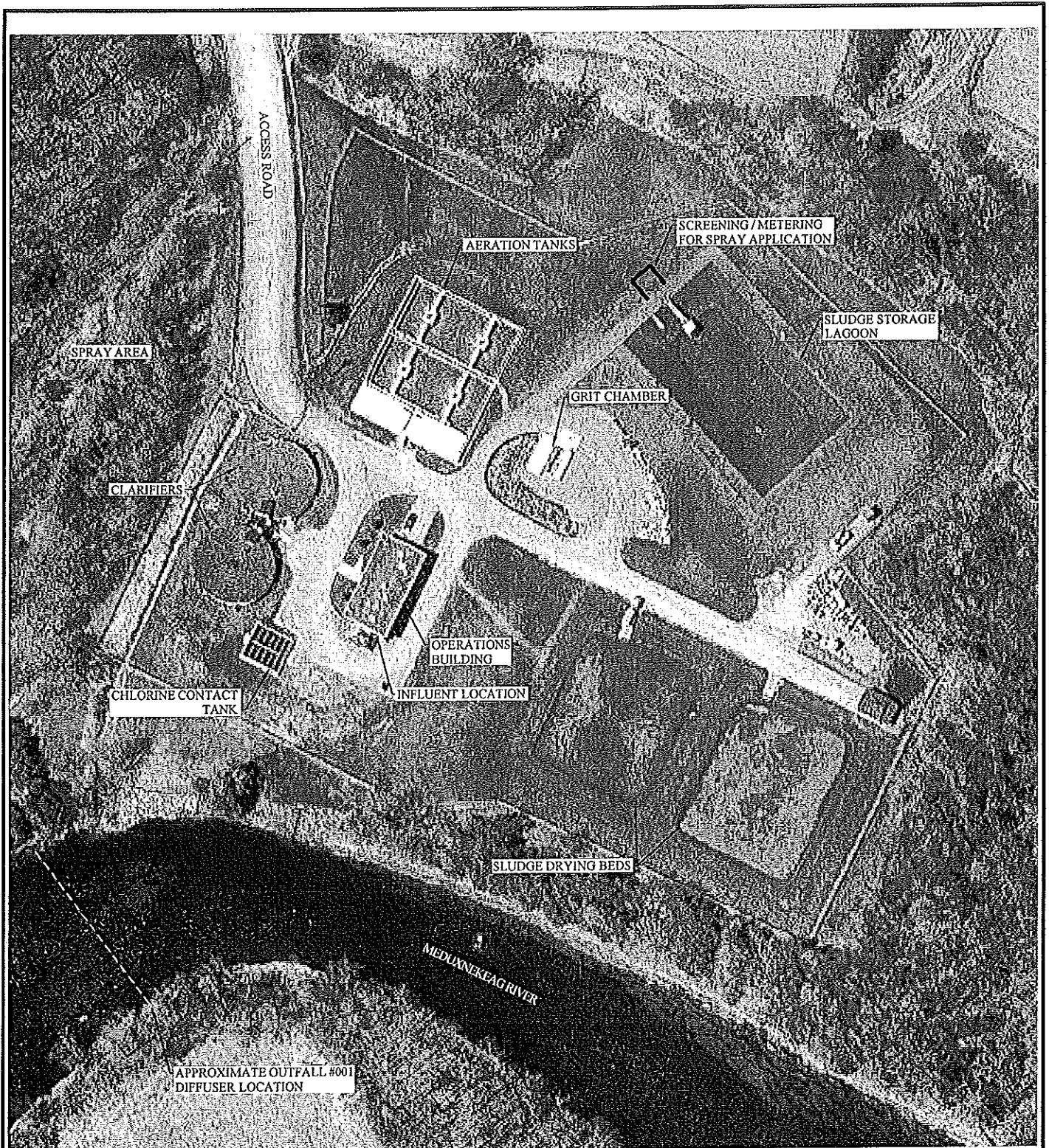


FIGURE 2

HOULTON WATER COMPANY
 WASTEWATER TREATMENT FACILITY
 FACILITY STRUCTURES MAP

ACHERON ENGINEERING SERVICES
 Engineering, Environmental & Geologic Consultants

www.AcheronEngineering.com

147 Main St.
 Newport, ME 04953
 (207)-368-5700

24466 Powell Rd.
 Brooksville, FL 34602
 (352)-796-6236

Acheron International, Inc.

JOB NO: 22844

DWG NO: A-1780

SCALE: NTS

DATE: 11-4-09

ATTACHMENT C

9/9/2025

WET TEST REPORT

Data for tests conducted for the period

09/Sep/2020 -09/Sep/2025



HOULTON WATER COMPANY

NPDES= ME0101290

Effluent Limit: Acute (%) = 16.393

Chronic (%) = 13.889

Species	Test	Percent	Sample date	Critical %	Exception	RP
TROUT	A_NOEL	100	01/19/2021	16.393		
TROUT	A_NOEL	100	07/12/2022	16.393		
TROUT	A_NOEL	100	05/09/2023	16.393		
TROUT	A_NOEL	100	02/06/2024	16.393		
TROUT	A_NOEL	100	10/08/2024	16.393		
TROUT	A_NOEL	100	01/07/2025	16.393		
TROUT	A_NOEL	100	04/08/2025	16.393		
TROUT	C_NOEL	100	01/19/2021	13.889		
TROUT	C_NOEL	100	07/12/2022	13.889		
TROUT	C_NOEL	100	05/09/2023	13.889		
TROUT	C_NOEL	100	02/06/2024	13.889		
TROUT	C_NOEL	100	10/08/2024	13.889		
TROUT	C_NOEL	100	01/07/2025	13.889		
TROUT	C_NOEL	100	04/08/2025	13.889		
WATER FLEA	A_NOEL	100	01/19/2021	16.393		
WATER FLEA	A_NOEL	100	07/12/2022	16.393		
WATER FLEA	A_NOEL	100	05/09/2023	16.393		
WATER FLEA	A_NOEL	100	02/06/2024	16.393		
WATER FLEA	A_NOEL	100	10/08/2024	16.393		
WATER FLEA	A_NOEL	100	01/07/2025	16.393		
WATER FLEA	A_NOEL	100	04/08/2025	16.393		
WATER FLEA	C_NOEL	100	01/19/2021	13.889		
WATER FLEA	C_NOEL	100	07/12/2022	13.889		
WATER FLEA	C_NOEL	100	05/09/2023	13.889		
WATER FLEA	C_NOEL	100	02/06/2024	13.889		
WATER FLEA	C_NOEL	100	10/08/2024	13.889		
WATER FLEA	C_NOEL	100	01/07/2025	13.889		
WATER FLEA	C_NOEL	100	04/08/2025	13.889		

ATTACHMENT D

Data Date Range: 09/Sep/2020 - 09/Sep/2025

Showing all data

Facility name: **HOULTON WATER COMPANY**Permit Number: **ME0101290**

Parameter: 1,1,1-TRICHLOROETHANE	Test date	Result (ug/l)	Lsthan
	10/08/2024	2.000	Y
Parameter: 1,1,2,2-TETRACHLOROETH	Test date	Result (ug/l)	Lsthan
	10/08/2024	1.000	Y
Parameter: 1,1,2-TRICHLOROETHANE	Test date	Result (ug/l)	Lsthan
	10/08/2024	1.500	Y
Parameter: 1,1-DICHLOROETHANE	Test date	Result (ug/l)	Lsthan
	10/08/2024	1.500	Y
Parameter: 1,1-DICHLOROETHYLENE	Test date	Result (ug/l)	Lsthan
	10/08/2024	1.000	Y
Parameter: 1,2-(O)DICHLOROBENZEN	Test date	Result (ug/l)	Lsthan
	10/08/2024	5.000	Y
Parameter: 1,2,4-TRICHLOROBENZEN	Test date	Result (ug/l)	Lsthan
	10/08/2024	5.000	Y
Parameter: 1,2-DICHLOROETHANE	Test date	Result (ug/l)	Lsthan
	10/08/2024	1.500	Y
Parameter: 1,2-DICHLOROPROPANE	Test date	Result (ug/l)	Lsthan
	10/08/2024	3.500	Y
Parameter: 1,2-DIPHENYLHYDRAZINE	Test date	Result (ug/l)	Lsthan
	01/19/2021	2.000	Y
	10/08/2024	2.000	Y
Parameter: 1,2-TRANS-DICHLOROETH	Test date	Result (ug/l)	Lsthan
	10/08/2024	1.500	Y
Parameter: 1,3-(M)DICHLOROBENZEN	Test date	Result (ug/l)	Lsthan
	10/08/2024	5.000	Y
Parameter: 1,3-DICHLOROPROPYLENE	Test date	Result (ug/l)	Lsthan
	10/08/2024	1.500	Y
Parameter: 1,4-(P)DICHLOROBENZEN	Test date	Result (ug/l)	Lsthan
	10/08/2024	5.000	Y
Parameter: 2,4,6-TRICHLOROPHENOL	Test date	Result (ug/l)	Lsthan
	10/08/2024	5.000	Y
Parameter: 2,4-DICHLOROPHENOL	Test date	Result (ug/l)	Lsthan
	10/08/2024	5.000	Y
Parameter: 2,4-DIMETHYLPHENOL	Test date	Result (ug/l)	Lsthan
	10/08/2024	5.000	Y
Parameter: 2,4-DINITROPHENOL	Test date	Result (ug/l)	Lsthan
	10/08/2024	20.000	Y

Data Date Range: 09/Sep/2020 - 09/Sep/2025

Showing all data

Facility name: **HOULTON WATER COMPANY**Permit Number: **ME0101290**

Parameter:	Test date	Result (ug/l)	Lsthan
2,4-DINITROTOLUENE	10/08/2024	5.000	Y
2,6-DINITROTOLUENE	10/08/2024	5.000	Y
2-CHLOROETHYLVINYL ET	01/25/2021	10.000	Y
	10/08/2024	10.000	Y
2-CHLORONAPHTHALENE	10/08/2024	2.000	Y
2-CHLOROPHENOL	10/08/2024	2.000	Y
2-NITROPHENOL	10/08/2024	5.000	Y
3,3'-DICHLOROBENZIDINE	10/08/2024	5.000	Y
3,4-BENZO(B)FLUORANTH	10/08/2024	2.000	Y
4,4'-DDD	10/08/2024	0.040	Y
4,4'-DDE	10/08/2024	0.040	Y
4,4'-DDT	10/08/2024	0.040	Y
4,6-DINITRO-O-CRESOL	10/08/2024	10.000	Y
4-BROMOPHENYLPHENYL	10/08/2024	2.000	Y
4-CHLOROPHENYL PHENYL	10/08/2024	2.000	Y
4-NITROPHENOL	10/08/2024	10.000	Y
A-BHC	10/08/2024	0.020	Y
ACENAPHTHENE	10/08/2024	2.000	Y
ACENAPHTHYLENE	10/08/2024	2.000	Y

Data Date Range: 09/Sep/2020 - 09/Sep/2025

Showing all data

Facility name: **HOULTON WATER COMPANY**Permit Number: **ME0101290**

Parameter:	Test date	Result (ug/l)	Lsthan
ACROLEIN	01/25/2021	8.000	Y
	10/08/2024	8.000	Y
ACRYLONITRILE	01/25/2021	10.000	Y
	10/08/2024	10.000	Y
A-ENDOSULFAN	10/08/2024	0.020	Y
ALDRIN	10/08/2024	0.020	Y
ALUMINUM	01/19/2021	20.000	Y
	07/12/2022	10.000	Y
	05/09/2023	10.000	Y
	02/06/2024	10.000	Y
	10/08/2024	10.000	Y
	01/07/2025	10.000	Y
	04/08/2025	10.000	Y
AMMONIA	01/19/2021	240.000	N
	07/12/2022	155.000	N
	05/09/2023	205.000	N
	02/06/2024	104.000	N
	10/08/2024	1130.000	N
	01/07/2025	172.000	N
	04/08/2025	75.000	Y
ANTHRACENE	10/08/2024	2.000	Y
ANTIMONY	10/08/2024	4.000	Y
ARSENIC	01/19/2021	1.000	Y
	07/12/2022	1.000	Y
	05/09/2023	1.000	Y
	02/06/2024	1.000	Y
	10/08/2024	1.000	Y
	01/07/2025	1.000	Y
	04/08/2025	1.000	Y
B-BHC	10/08/2024	0.020	Y
B-ENDOSULFAN	10/08/2024	0.040	Y

Data Date Range: 09/Sep/2020 - 09/Sep/2025

Showing all data

Facility name: **HOULTON WATER COMPANY**Permit Number: **ME0101290**

Parameter:	Test date	Result (ug/l)	Lsthan
BENZENE	10/08/2024	1.000	Y
BENZIDINE	10/08/2024	20.000	Y
BENZO(A)ANTHRACENE	10/08/2024	2.000	Y
BENZO(A)PYRENE	10/08/2024	2.000	Y
BENZO(G,H,I)PERYLENE	10/08/2024	2.000	Y
BENZO(K)FLUORANTHENE	10/08/2024	2.000	Y
BERYLLIUM	10/08/2024	1.000	Y
BIS(2-CHLOROETHOXY)ME	10/08/2024	5.000	Y
BIS(2-CHLOROETHYL)ETH	10/08/2024	2.000	Y
BIS(2-CHLOROISOPROPYL	10/08/2024	2.000	Y
BIS(2-ETHYLHEXYL)PHTHA	10/08/2024	2.200	Y
BROMOFORM	10/08/2024	1.000	Y
BUTYLBENZYL PHTHALATE	10/08/2024	5.000	Y
CADMIUM	01/19/2021	0.200	Y
	07/12/2022	0.200	Y
	05/09/2023	0.200	Y
	02/06/2024	0.200	Y
	10/08/2024	0.200	Y
	01/07/2025	0.200	Y
	04/08/2025	0.200	Y
CARBON TETRACHLORIDE	10/08/2024	1.000	Y
CHLORDANE	01/19/2021	0.100	Y
	10/08/2024	0.100	Y

Data Date Range: 09/Sep/2020 - 09/Sep/2025

Showing all data

Facility name: **HOULTON WATER COMPANY**Permit Number: **ME0101290**

Parameter: CHLOROBENZENE	Test date	Result (ug/l)	Lsthan
	10/08/2024	3.500	Y
Parameter: CHLORODIBROMOMETHAN	Test date	Result (ug/l)	Lsthan
	10/08/2024	1.000	Y
Parameter: CHLOROETHANE	Test date	Result (ug/l)	Lsthan
	10/08/2024	2.000	Y
Parameter: CHLOROFORM	Test date	Result (ug/l)	Lsthan
	10/08/2024	1.000	Y
Parameter: CHROMIUM	Test date	Result (ug/l)	Lsthan
	01/19/2021	1.000	Y
	07/12/2022	1.000	Y
	05/09/2023	1.000	Y
	02/06/2024	1.000	Y
	10/08/2024	1.000	Y
	01/07/2025	1.000	Y
	04/08/2025	1.000	Y
Parameter: CHRYSENE	Test date	Result (ug/l)	Lsthan
	10/08/2024	2.000	Y
Parameter: COPPER	Test date	Result (ug/l)	Lsthan
	01/19/2021	5.670	N
	07/12/2022	38.910	N
	08/15/2022	4.430	N
	09/12/2022	4.440	N
	05/09/2023	3.010	N
	02/06/2024	3.830	N
	10/08/2024	8.060	N
	01/07/2025	2.890	N
	04/08/2025	3.340	N
Parameter: CYANIDE TOTAL	Test date	Result (ug/l)	Lsthan
	01/19/2021	5.000	Y
	07/12/2022	5.000	Y
	05/09/2023	5.000	Y
	02/06/2024	5.000	Y
	10/08/2024	5.000	Y
	01/07/2025	5.000	Y
	04/08/2025	5.000	Y
Parameter: D-BHC	Test date	Result (ug/l)	Lsthan
	10/08/2024	0.020	Y
Parameter: DIBENZO(A,H)ANTHRACEN	Test date	Result (ug/l)	Lsthan
	10/08/2024	2.000	Y
Parameter: DICHLOROBROMOMETHAN	Test date	Result (ug/l)	Lsthan
	10/08/2024	1.000	Y

Data Date Range: 09/Sep/2020 - 09/Sep/2025

Showing all data

Facility name: **HOULTON WATER COMPANY**Permit Number: **ME0101290**

Parameter:	Test date	Result (ug/l)	Lsthan
DIELDRIN	10/08/2024	0.040	Y
DIETHYL PHTHALATE	10/08/2024	5.000	Y
DIMETHYL PHTHALATE	10/08/2024	5.000	Y
DI-N-BUTYL PHTHALATE	10/08/2024	5.000	Y
DI-N-OCTYL PHTHALATE	10/08/2024	5.000	Y
ENDOSULFAN SULFATE	10/08/2024	0.040	Y
ENDRIN	10/08/2024	0.040	Y
ENDRIN ALDEHYDE	10/08/2024	0.040	Y
ETHYLBENZENE	10/08/2024	1.000	Y
FLUORANTHENE	10/08/2024	2.000	Y
FLUORENE	10/08/2024	2.000	Y
G-BHC	10/08/2024	0.020	Y
HEPTACHLOR	10/08/2024	0.020	Y
HEPTACHLOR EPOXIDE	10/08/2024	0.020	Y
HEXACHLOROBENZENE	10/08/2024	2.000	Y
HEXACHLOROBUTADIENE	10/08/2024	2.000	Y
HEXACHLOROCYCLOPENTA	10/08/2024	10.000	Y
HEXACHLOROETHANE	10/08/2024	2.000	Y
INDENO(1,2,3-CD)PYRENE			

Data Date Range: 09/Sep/2020 - 09/Sep/2025

Showing all data

Facility name: **HOULTON WATER COMPANY**Permit Number: **ME0101290**

Parameter:	Test date	Result (ug/l)	Lsthan	
ISOPHORONE	10/08/2024	2.000	Y	
	Test date	Result (ug/l)	Lsthan	
LEAD	10/08/2024	5.000	Y	
	Test date	Result (ug/l)	Lsthan	
MERCURY	01/19/2021	0.245	N	
	07/12/2022	1.000	Y	
	05/09/2023	1.000	Y	
	02/06/2024	1.000	Y	
	10/08/2024	1.000	Y	
	01/07/2025	1.000	Y	
	04/08/2025	1.000	Y	
	Test date	Result (ug/l)	Lsthan	
	METHYL BROMIDE	01/19/2021	0.001	N
		07/12/2022	0.001	N
05/09/2023		0.001	N	
10/08/2024		0.002	N	
01/07/2025		0.001	N	
Test date		Result (ug/l)	Lsthan	
METHYL CHLORIDE	10/08/2024	5.000	Y	
	Test date	Result (ug/l)	Lsthan	
METHYLENE CHLORIDE	10/08/2024	5.000	Y	
	Test date	Result (ug/l)	Lsthan	
NAPHTHALENE	10/08/2024	1.000	Y	
	Test date	Result (ug/l)	Lsthan	
NICKEL	10/08/2024	2.000	Y	
	Test date	Result (ug/l)	Lsthan	
NITROBENZENE	01/19/2021	0.690	N	
	07/12/2022	2.000	Y	
	05/09/2023	2.000	Y	
	02/06/2024	2.000	Y	
	10/08/2024	2.430	N	
	01/07/2025	2.000	Y	
	04/08/2025	2.000	Y	
	Test date	Result (ug/l)	Lsthan	
N-NITROSODIMETHYLAMI	10/08/2024	2.000	Y	
	Test date	Result (ug/l)	Lsthan	
N-NITROSODI-N-PROPYLA	10/08/2024	2.000	Y	
	Test date	Result (ug/l)	Lsthan	
N-NITROSODIPHENYLAMINE	10/08/2024	5.000	Y	
	Test date	Result (ug/l)	Lsthan	
	10/08/2024	2.000	Y	

Data Date Range: 09/Sep/2020 - 09/Sep/2025

Showing all data

Facility name: **HOULTON WATER COMPANY**Permit Number: **ME0101290**

Parameter:	Test date	Result (ug/l)	Lsthan
PCB-1016	10/08/2024	0.250	Y
PCB-1221	10/08/2024	0.250	Y
PCB-1232	10/08/2024	0.250	Y
PCB-1242	10/08/2024	0.250	Y
PCB-1248	10/08/2024	0.250	Y
PCB-1254	10/08/2024	0.250	Y
PCB-1260	10/08/2024	0.250	Y
P-CHLORO-M-CRESOL	10/08/2024	0.200	Y
PENTACHLOROPHENOL	10/08/2024	2.000	Y
PHENANTHRENE	10/08/2024	5.000	Y
PHENOL	10/08/2024	2.000	Y
PYRENE	10/08/2024	5.000	Y
SELENIUM	10/08/2024	2.000	Y
SILVER	10/08/2024	5.000	Y
SPECIFIC CONDUCTANCE	01/19/2021	0.200	Y
	07/12/2022	0.400	Y
	05/09/2023	0.400	Y
	02/06/2024	0.400	Y
	10/08/2024	0.400	Y
	01/07/2025	0.400	Y
	04/08/2025	0.400	Y
SPECIFIC CONDUCTANCE	01/19/2021	1091.000	N
	07/12/2022	1100.000	N
	05/09/2023	1004.000	N
	02/06/2024	1074.000	N
	10/08/2024	1055.000	N



Facility name: **HOULTON WATER COMPANY**

Permit Number: **ME0101290**

Parameter:	Test date	Result (ug/l)	Lsthan
TETRACHLOROETHYLENE	01/07/2025	1107.000	N
	04/08/2025	1146.000	N
THALLIUM	10/08/2024	1.000	Y
TOLUENE	10/08/2024	1.000	Y
TOXAPHENE	10/08/2024	1.000	Y
TRICHLOROETHYLENE	01/19/2021	0.400	Y
	10/08/2024	0.400	Y
VINYL CHLORIDE	10/08/2024	1.000	Y
ZINC	10/08/2024	1.000	Y
	01/19/2021	40.200	N
	07/12/2022	39.480	N
	05/09/2023	22.850	N
	02/06/2024	36.420	N
	10/08/2024	21.810	N
	01/07/2025	21.570	N
	04/08/2025	16.440	N